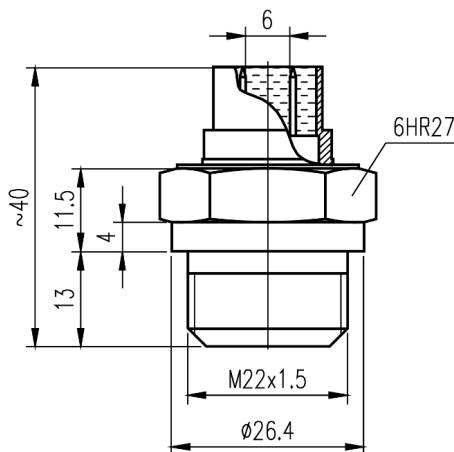


## TERMOSTAT TH 472

### Description and use

Thermostat TH 472 is made as one unit. Sensor and the electrical switch system are assembled, adjusted and enclosed in the thermostat body. To install it in specified hole, use thread M 22x1.5 on the thermostat body and hexagon head OK 27. Connecting terminals are flat pins 6.3 mm that are electrically insulated from the thermostat body. Thermostat head with flat pins is connected permanently with thermostat body. Thermostat is supplied with sealing ring diameter 22x27. Required temperature is adjusted in manufacturer according specification in order set temperature can not be changed by user.

### Technical drawings



### Installation

The installation and connection of the thermostat to the electric circuit of the car's additional cooling fan may only be carried out by a specialist service worker. During installation, it is necessary to proceed according to the following recommendations:

- The thermostat is fixed in the hole with M22x1.5 thread using the key No. 27, with a maximum torque of 50 Nm. Screwing and fixing can not be done by grasping the flat pins on the switch head.
- The mounting thread is M22 x 1.5 6h.
- The connection to the electrical circuit is made using flat pins with a connection size of 6.3 x 0.8 according to ČSN EN 61 210.
- **Install the thermostat in cars in which the TH was located before installation - pay attention to the nominal switch-on temperature and the (R) or (Z) version!!!**

- The sensor switch body can not come into the contact with aggressive substances that react corrosively to brass.

### Method of use

Thermostats TH 472 are intended for switching el. the circuit of the fan of the additional cooling of cars. The working position of the thermostat is arbitrary. Consult the manufacturer for other uses. After installing the TH, follow the instructions in the manual of the car in which the TH is installed.

### Impact on other products

Due to the operation of the contacts at TH, there is a short-term fluctuation of the voltage on the contacts, which is superimposed on the waveform of the power supply.

### Technical data

The thermostat is produced in a closing (Z) or opening (R) version.

Rated temperature	30 till 115 °C
Rated contacts load	6 till 24 V max. 6 A ss or stf.
Vibration resistance	5 g
Weight	55 g
Max. temperature – přechodně	125 °C
Temperature	(-40 ÷ +90) °C
Lifetime	10 000 cycles

Setting accuracy of rated temperature	Switching difference	
	4÷18 K	4÷12 K
±3 K	A	B
±2 K	C	D

### Storage conditions

Thermostats can be stored in closed, ventilated spaces in the temperature range of 0-40 °C with a relative humidity of max. 80%. The thread, sealing surface and connecting terminals must not be damaged during storage and handling.

### Disposal

Disposal is carried out in the following way: Hand over to collection raw materials.

### Defects

Defects on TH thermostats are removed exclusively by the manufacturer.

### Guarantee

If the thermostat is placed and used in accordance with the instructions given in the installation and operating instructions, the manufacturer provides a

warranty according to the applicable code, unless otherwise agreed.

The manufacturer will refuse warranty repair if the device has been damaged:

- during transport and storage by the customer, or his customers
- during assembly or disassembly into the customer's equipment, or his customers
- during unprofessional handling and installation in a device other than that specified in the instructions
- in case the TH has been exposed to environments other than those specified in the manual.

### Warranty and post-warranty repairs

Warranty and post-warranty repairs are provided by manufacturer. Pack the product and send it to adress:

**APATOR METRA s.r.o.**

Havlíčková 919/24  
787 01 Šumperk

Tel.: 583 718 263

Fax: 583 718 150

E-mail: [prodej@metra-su.cz](mailto:prodej@metra-su.cz)

www: <http://www.metra-su.cz>