

# Adjustable sockets



Adjustable thread socket and adjustable cone socket is intended as accessory for thermometer installation. Installation is done by screwing thread socket or by fixing cone socket into the hole.

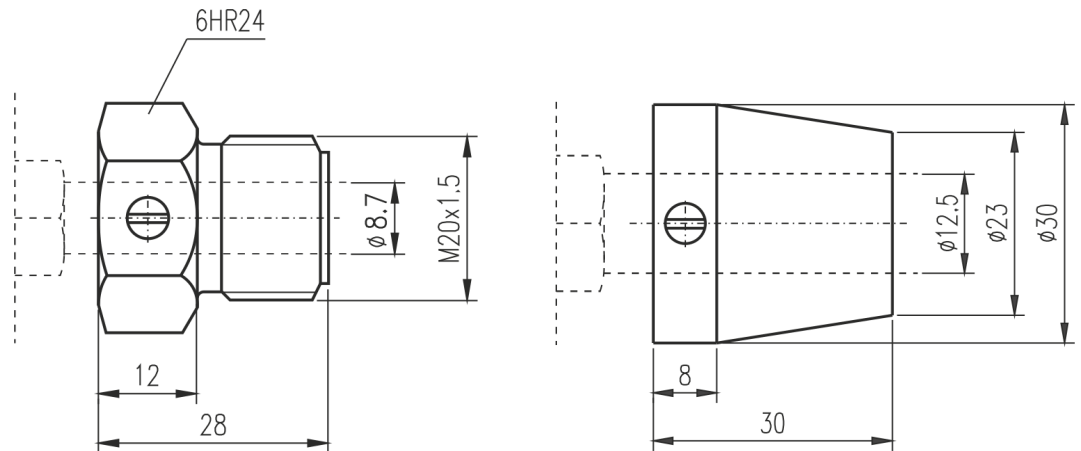
**Description**

Adjustable sockets are made from steel. It can be surface finished by painting, blue chromate zincing or by chromium-plating. To install thermometer, insert it to the socket and secure by M5 x 8 screw.

**Technical data**

| Type of adjustable socket                                  | Thermometer type   |
|--|--|
| TR, TU, DTR, DTU stem length ≤ 400 mm stem diameter = 8 mm | TR, TU stem length ≥ 630 mm stem diameter = 10 mm<br>DTR, DTU stem length ≥ 630 mm stem diameter = 12 mm |
| Thread   | inner diameter $\phi d = 8,7$ mm<br>-----<br>inner diameter $\phi d = 12,5$ mm                           |
| Cone   | -----<br>inner diameter $\phi d = 12,5$  |

**Technical drawings**



**APATOR METRA s. r. o.**

Havlíčková 919/24  
787 01 Šumperk  
Czech Republic

Tel.: +420 583 718 261  
Fax.: +420 583 718 150  
E-mail: [prodej@metra-su.cz](mailto:prodej@metra-su.cz)  
WWW: [www.metra-su.cz](http://www.metra-su.cz)

Your distributor:

The manufacturer reserves the right to change design, technical specifications and accessories without prior notice.