

Thermostat wells



Description

Thermostat well is intended for installation in designated device (e.g. electrical boiler, water heater). Installation is done by screwing the well neck to device coat using suitable sealing. To install the thermostat, insert it into the well of suitable size and secure it by M4 bolt (thermostat series TH 160).

Installing thermostat series TH 140, place its head before securing the lock-nut. Do not rotate the thermostat head when lock-nut is secured as this can damage the thermostat.

Maximum working pressure is PN 6 according to ČSN 130010. All manufactured thermostat wells are subjected to pressure leak test by air under water.

Technical data

Thermostat type	L [mm]	L ₁ [mm]
TH 140	337	360
TH 140 ZP 16	107	130
TH 141	287	310
TH 143	337	360
TH 144	287	310
TH 160	324	336
TH 160.1	324	336
TH 160.2	324	336
TH 162	110	122
TH 163	110	122
TH 164	170	182
TH 165	170	182
TH 166	210	222
TH 167	260	272
TH 169	324	336

Material

TH 160 + Series:

Well neck - steel

Stem - copper

Coating - chrome Ni10 Cr0,2 (hard chrome glossy)

TH 140 + Series:

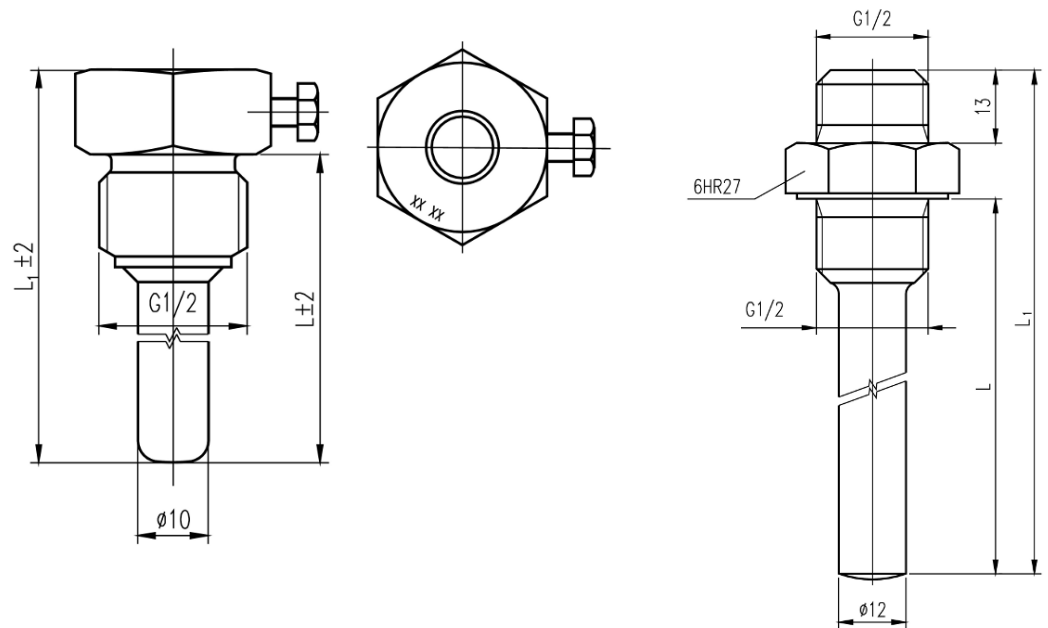
Well neck - steel

Stem - steel

Coating - chrome Ni10 Cr0,2 (hard chrome glossy)

Hard chrome: The advantage of using hard chrome coating is its high corrosion resistance, hardness and abrasion resistance.

Technical drawings



Contacts

APATOR METRA s. r. o.

Havlíčková 919/24

787 01 Šumperk

Czech Republic

Tel.: +420 583 718 261

Fax.: +420 583 718 150

E-mail: prodej@metra-su.cz

WWW: www.metra-su.cz

Your distributor:

The manufacturer reserves the right to change design, technical specifications and accessories without prior notice.