



**ELECTRONIC HEAT COST ALLOCATOR WITH
INTEGRATED RADIO TRANSMITTER**

E-ITN 40

Manual for installation service and operation

APATOR METRA s.r.o.

Havlíčková 919/24

787 01 Šumperk

tel.: +420 583 718 111

e-mail: prodej@metra-su.cz

www: <http://www.metra-su.cz>

List of content

1. Introduction.....	4
1.1. LC display.....	4
2. Device description	5
3. Technical specifications.....	9
3.1. Construction	12
3.2. Firmware updates.....	13
3.3. Variants of E-ITN 40 packets.....	13
4. Operation modes of allocator	15
4.1. OPERATION MODES	15
4.2. SUBMENU NAVIGATION.....	15
4.3. WORKING MODE.....	15
4.3.1. Menu structure in working mode.....	15
4.3.2. Last year of battery life	16
4.4. Error mode.....	16
5. Other information about product.....	17
5.1. Electronic seal reactivation.....	17
5.2. Transportation.....	17
5.3. Storage.....	17
5.4. Application and disposal.....	17
5.5. Defects and their elimination	17
5.6. Warranty	17
6. Accompanying documentation	18
6.1. Packing.....	18
7. Mounting methods.....	20
7.1. Allocator installation.....	20
7.2. Allocator back plate	21
7.3. List of installation material.....	22
7.4. E-ITN 40 mounting place on segmented and panel radiators.....	23
7.4.1. Vertical position:	23
7.4.2. Horizontal position:	23
7.5. Installation on segmented radiators.....	25
7.5.1. Description of installation.....	26
7.5.2. Installation differences.....	26
7.6. Installation on panel radiators.....	27
7.6.1. Description of installation.....	27
7.7. Installation on horizontal and vertical registers.....	29

- 7.7.1. Installation description.....29
- 7.7.2. Proper E-ITN 40 installation on different register types.....30
- 8. External sensor for E-ITN 40.....32
 - 8.1. Device description.....32
 - 8.2. Application.....32
 - 8.3. Technical data.....32
 - 8.4. Preparing the indicator for installation.....32
 - 8.5. Installation and mounting methods.....37
 - 8.6. Sensor base plate.....37
 - 8.6.1. Overview of assembly material.....38
 - 8.6.2. Mounting location of the E-ITN 40 indicator with external sensor on panel and plate heaters 39

1. INTRODUCTION

E-ITN 40 is modern electronic device intended for ratio based allocation of heat cost in buildings with central heating system. The heat cost allocator E-ITN 40 uses the two-sensor measuring principle – integrates temperature difference between sensor of radiator surface temperature and sensor of surrounding temperature. Using this principle, allocator ensures measurement of consumption value only when the radiator really emits heat. Compared to one-sensor allocator it minimizes the risk of summer consumption.

E-ITN 40 is intended to be installed in one-tube horizontal/vertical and two-tube heating systems with the lowest mean design heating medium temperature ≥ 35 °C and highest mean design heating medium temperature ≤ 105 °C.

Each radiator in billing (account) unit with common invoicing heat meter must be equipped with a heat cost allocator of the same type. Technical conditions of heating system must be fulfilled when using heat cost allocators E-ITN 40.

E-ITN 40 is not intended for heat cost allocation for floor heating systems, ceiling radiant heating, flap controlled radiators, radiators with fan, systems with steam heating medium, air heaters and single tube radiators if exceeds the scope of one user. It must not be also used for heating elements that shape and design does not allow reliable transfer of heat to heat cost allocators.

1.1. LC DISPLAY

Basic information about the status of the indicator and the measured values can be displayed on the LC display, which is best readable at an angle of "12" hours. LCD can display five alphanumeric characters. These values are highlighted by underline and over-line, e.g. oPEn.

Meaning of some values may be different if the additional symbol „SM“ at the right bottom corner is displayed. These values are mentioned with „SM“ symbol in text , e.g. 385 SM.

The last symbol on the display indicate end of the battery life, see chapter 4.3.2.

To save the battery, after longer period of inactivity (approx. 30 sec.), energy-saving mode is activated and display is switched off. Display can be activated by pushing the button. (Illustration 1:LC Display).

When pushing the button briefly, notice ---- on the display will appear. If the button is not pushed in 30 seconds, the display will switch off.

The data displayed on the LCD display may vary depending on the type of the allocator and also on the active operating mode. For more information, see below.

2. DEVICE DESCRIPTION

Installation of allocator consists only from mounting of base plate from aluminium alloy and placing of allocator to this base plate. Due to integrated radio transmitter, presence of flat occupant is not required when data are read. No strangers also enter the flat. Data reading can be made by billing company employee using mobile receiving unit RFU 40 outside the house.

Data from the E-ITN 40 can only be read using the RFU 40 and CRS V3 (cannot be read using the RFU 35 and CRS V2).

Measured data are transmitted in a short ~ 5-22 ms radio telegrams and secured by encryption. Data are transmitted based on customer's settings.

Possible modes of transmission are:

Type of transmission	Packet content
Beacon	<ul style="list-style-type: none"> • Date of device • Error • Status of external sensor • Status of seals
METRA	<ul style="list-style-type: none"> • Date of device • Error • Status of external sensor • Status of seals • Temperatures <ul style="list-style-type: none"> Current temperature of radiator sensor <ul style="list-style-type: none"> • <u>Maximums</u> <ul style="list-style-type: none"> Max. temperature of radiator sensor for current monthly billing period Max. temperature of radiator sensor for current yearly billing period Max. temperature of radiator sensor for past yearly billing period Date of maximum temperature of radiator sensor from past billing period Maximum temperature of radiator sensor for -1. to -3. monthly billing period Maximum temperature of radiator sensor for -4. to -6. monthly billing period Maximum temperature of radiator sensor for -7. to -9. monthly billing period Maximum temperature of radiator sensor for -10. to -12. monthly billing period • <u>Minimums</u> <ul style="list-style-type: none"> Min. temperature of radiator sensor for current monthly billing period Min. temperature of radiator sensor for current yearly billing period Min. temperature of radiator sensor for past yearly billing period Date of minimum temperature of radiator sensor from past billing period Minimum temperature of radiator sensor for -1. to -3. monthly billing period Minimum temperature of radiator sensor for -4. to -6. monthly billing period Minimum temperature of radiator sensor for -7. to -9. monthly billing period Minimum temperature of radiator f sensor or -10. to -12. monthly billing period • <u>Averages</u> <ul style="list-style-type: none"> Average temperature of radiator sensor for current monthly billing period Average temperature of radiator sensor for previous day Average temperature of radiator sensor for -1. to -3. monthly billing period Average temperature of radiator sensor for -4. to -6. monthly billing period Average temperature of radiator sensor for -7. to -9. monthly billing period Average temperature of radiator sensor for -10. to -12. monthly billing period

- Environment temperatures

Current temperature of environment

Averages

- Average temperature of environment for current monthly billing period
- Average temperature of environment for current yearly billing period
- Average temperature of environment for past yearly billing period
- Average temperature of environment for previous day
- Average temperature of environment for -1. to -3. monthly billing period
- Average temperature of environment for -4. to -6. monthly billing period
- Average temperature of environment for -7. to -9. monthly billing period
- Average temperature of environment for -10. to -12. monthly billing period

- Ti(ss)

Averages

- Average temperature Ti(ss) for current monthly billing period
- Average temperature Ti(ss) for yearly monthly billing period
- Average temperature Ti(ss) for previous day

- Day counters

Number of days with updated Ti(ss) temperature for current monthly billing period
 Number of days of changing temperature Ti(ss) for -1. až -3. monthly billing period
 Number of days of changing temperature Ti(ss) for -4. až -6. monthly billing period
 Number of days of changing temperature Ti(ss) for -7. až -9. monthly billing period
 Number of days of changing temperature Ti(ss) for -10. až -12. monthly billing period

- Readings

Total consumption

Date of beginning of measuring of total consumption

Total consumption at the time of breaking electronic seal

Total consumption at the time of error

Monthly billing period

- Consumption for current monthly billing period
- Consumption for -1. až -3. monthly billing period
- Consumption for -4. až -6. monthly billing period
- Consumption for -7. až -9. monthly billing period
- Consumption for -10. až -12. monthly billing period
- Consumption for -13. až -15. monthly billing period
- Consumption for -16. až -18. monthly billing period
- Consumption for -19. až -21. monthly billing period
- Consumption for -22. až -24. monthly billing period

Yearly billing period

- Consumption for current yearly billing period
- Consumption for -1. až -3. yearly billing period
- Consumption for -4. až -6. yearly billing period

- Errors

Date of error

Total consumption at the time of error

- Seals

Date of break of electronic seal

Total consumption at the time of breaking electronic seal

- Dates

Date of break of electronic seal

Date of error

	<p>Date of beginning of measuring of total consumption Date of reading/ Current date Start of winter heating season</p> <ul style="list-style-type: none"> • Start of summer heating season • Date of beginning of billing period • Date of maximum temperature of radiator sensor from past billing period • Date of minimum temperature of radiator sensor from past billing period <ul style="list-style-type: none"> • Device state Count is summer heating season Kq power of radiator Coefficient Kc Current time of allocator Counters Number of days of operation for current monthly billing period Number of days of operation for -1. to -3. monthly billing period Number of days of operation for -4. to -6. monthly billing period Number of days of operation for -7. to -9. monthly billing period Number of days of operation for -10. to -12. monthly billing period Count of switching to single sensor mode for current monthly billing period Count of switching to single sensor mode for past monthly billing period Count of switching to single sensor mode for current yearly billing period Count of switching to single sensor mode for past yearly billing period
WIRELESS M-BUS	<ul style="list-style-type: none"> • Current date
WIRELESS M-BUS ENCRYPTED	<ul style="list-style-type: none"> • Serial number of device • Status of seals • Status of external sensor • Start of billing period • Consumption for current monthly billing period • Consumption for -1. až -3. yearly billing period • Consumption in current month • Consumption for -1. až -15. monthly billing period • Average temperature of environment for current yearly billing period • Average temperature of environment for past yearly billing period
WIRELESS M-BUS OMS	<ul style="list-style-type: none"> • Current date • Sériové číslo odečtového indikátoru • Status of seals • Status of external sensor • Start of billing period • Consumption for current monthly billing period • Consumption for 1 year billing period • Consumption in current month • Consumption for -1. až -15. monthly billing period • Average temperature of environment for current yearly billing period • Average temperature of environment for past yearly billing period
WIRELESS M-BUS OMS ENCRYPTED	<ul style="list-style-type: none"> • Current date • Sériové číslo odečtového indikátoru • Status of seals • Status of external sensor • Start of billing period • Consumption for current monthly billing period • Consumption for 1 year billing period • Consumption in current month • Consumption for -1. až -15. monthly billing period • Average temperature of environment for current yearly billing period • Average temperature of environment for past yearly billing period

Allocator is equipped with mechanic and electronic seal and is delivered in sealed state with activated electronic seal. In the case of unauthorized removing of base plate, the allocator saves the date of breach of the electronic seal to its memory and stop to show measured data on the display. After each press of button it is displayed oPEn and after that a menu item. Allocator continues in measuring and transmitting of measured data.

Notice oPEn will disappear when electronic seal is activated again with NFC.

The device is resistant against cheating. If any cheating is detected, allocator switches to the mode inconvenient for the user – after cheating is finished, the allocator switches to standard mode.

Allocator can work in mode of individual or unified scale. For correct evaluation it is necessary to use individual scale:

- power of radiator
- coefficient (K_c) taking into consideration heat transfer from radiator to temperature sensor

For unified scale:

- Power of radiator and coefficient is always the same.

Parameters can be set beforehand in production or before installation using radio or NFC.

All parameters you can set using application Radio Admin:

Measuring

- Count in summer
- Power of radiator
- Coefficient K_c
- Start of heating season
- Start of summer season
- Start of billing period

Menu (LCD)

- Radiator power
- Coefficient K_c
- Current temperature of radiator sensor
- Current temperature of environment
- Maximum temperature of radiator sensor for past yearly billing period
- Maximum temperature of radiator sensor for past monthly billing period
- Average temperature of radiator sensor for past yearly billing period
- Average temperature of radiator sensor for past monthly billing period
- Date
- Time
- Total consumption

Reading and setting of allocator is done using application Radio Admin for smartphones with system Android. Application can be downloaded in Google Play Store.

3. TECHNICAL SPECIFICATIONS

Application	$t_{\min} \geq 35 \text{ }^{\circ}\text{C}$ (min. temperature of the heating medium) $t_{\max} \leq 105 \text{ }^{\circ}\text{C}$ (max. temperature of the heating medium)
Measuring principle	two-sensor measuring principle
Conditions for registration	sensor temperature of the radiator $\geq 23 \text{ }^{\circ}\text{C}$ temperature difference between the mean heating medium temperature and the reference air temperature $\leq 5\text{K}$ (according to standard EN 834:2013), different conditions for registration in the summer period
Billing period	yearly or monthly (customer defined)
Total evaluation factor	unit scale, $K = 1$
Calendar functions	<p>Consumption</p> <ul style="list-style-type: none"> - total consumption (from beginning of operation or reset) - consumption for billing period (current yearly + 6 previous) - consumption for previous monthly billing period (current + 24 previous) - date of beginning of measuring total consumption (DD:MM:YY). - date of beginning of billing period (DD:MM) - date of beginning of heating season (DD:MM) - date of beginning of summer season (DD:MM) <p>Temperature of radiator</p> <ul style="list-style-type: none"> - max. temperature of sensor of radiator for past billing period (current yearly + past yearly) - max. temperature for sensor of radiator for past monthly billing period (current monthly + 12 previous) - min. temperature of sensor of radiator for past yearly billing period (current yearly + past yearly) - min. temperature of sensor of radiator for monthly billing period (current monthly + 12 previous) - average temperature of sensor of radiator for past monthly billing period (current monthly + 12 previous) - date of record of highest temperature of sensor of radiator for past yearly billing period - date of record of lowest temperature of sensor of radiator for past yearly billing period - average temperature of sensor of radiator for previous day - current temperature of sensor of radiator <p>Environment temperatures</p> <ul style="list-style-type: none"> - average temperature of environment for yearly billing period (current yearly + past yearly) (just 1. 11. to 31. 3.) - average temperature of environment for past monthly billing period (current monthly + 12 previous) - current average temperature of environment $T_i(ss)$ for yearly billing period (current yearly + past yearly) (in winter heating season configured by customer)

	<ul style="list-style-type: none"> - average temperature of environment $T_i(ss)$ for monthly billing period (current monthly + 12 previous) - number of dates with change of temperature $T_i(ss)$ (current monthly + 12 previous). Day of activation is registered when allocator during day at least 1x updates value $sT_i(ss)$. - average temperature of environment $T_i(ss)$ for previous day - average temperature of environment for previous day - current temperature of environment <p>Other features</p> <ul style="list-style-type: none"> - number of days of allocator operation for monthly billing period (current monthly + 12 previous). Day of operation is registered if allocator during days at least 1x registers increase of consumption - state of electronic seal of allocator and external sensor - date of broken electronic seal (DD:MM) - total consumption at the moment of broken electronic seal - error state (E0000) - date of error state - total consumption at the moment of error state - number of changing to single sensor mode (current yearly + 1 previous) - number of changing to single sensor mode (current monthly + 1 previous) - option to turn off measuring in summer season - adjustable start temperature of radiator in summer season that allocator starts to measure - option to turn off one way transmission in summer period - power of radiator (default 1000) - K_c coefficient (default 1)
Display	5 digits LCD + 2 special symbols
Protection against cheating	<p>continuous control, if thermal influence is detected, allocator is switched to single-sensor mode</p> <p>mechanical seal with billing company label</p> <p>electronic seal – records manipulation date when uninstalled</p> <p>mechanical seal is in external sensor and connector of external sensor</p>
Data backup	daily backup of measured values including real time
Function control	automatic, can be activated and controlled by user
Dimensions	100 x 41 x 31 mm
Power supply	lithium battery 3,0 V
Material	ABS + PC / AI – F22
IP code	IP 42
Conformity	ČSN EN 834
Operating frequency	868 MHz
Transmitting power	< 15 mW

Class of working cycle	1 (percentage of working cycle <0,1 %)
Transmission length	per customer settings 5-22 ms
Reading period	Configured by user using mask of a week. Two way communication always using proprietary protocol metra even in Wireless M-Bus mode.
Transmission range	up to 300 m (outside the building, with additional panel antenna) <i>Rem.: all metal parts of construction (switch rooms, armouring, lifts, etc.) can negatively affect the range of radio signal.</i>
Data coding	yes
Data transmitter over NFC interface and radio	<ul style="list-style-type: none"> - date of reading = current date - serial number of allocator - date of beginning of billing period (1-28. 1-12.) - consumption of allocator for current yearly billing period - (6x) consumption of allocator for 6 past yearly billing periods - reading of allocator for current monthly billing period - (24x) consumption of allocator for 24 previous monthly billing period - date of registering the highest temperature of sensor of radiator for past yearly billing period - max. temperature of sensor of radiator for current yearly billing period - max. temperature of sensor of radiator for past billing yearly period - max. temperature of radiator for current monthly billing period - (12x) max. temperatures of sensor of radiator for 12 past monthly billing periods - min. temperature of radiator sensor for current monthly billing period - min. temperature of radiator sensor for current yearly billing period - min. temperature of radiator sensor for past yearly billing period - (12x) min. temperatures of radiator sensor for 12 past monthly billing periods - date of registering lowest temperature of radiator sensor for previous yearly billing period - average temperature of radiator sensor of current monthly billing period - (12x) average temperatures of radiator sensor for 12 previous monthly billing periods - number of days in operation for current monthly billing period - (12x) number of days in operation for 12 past monthly billing period - average temperature of environment for current monthly billing period (1. 1. to 31.12.) - (12x) average temperatures of environment for 12 past monthly billing periods (1. 1. to 31. 12.) - average temperature of environment for current yearly billing period (1. 11. to 31. 3.) - current temperature of environment for previous yearly billing period (11. 11 to 31. 3.) - number of days with changing temperature $T_i(ss)$ for current and monthly billing period - (12x) number of days with changing temperature $T_i(ss)$ for 12 past monthly billing periods (1. 1. to 31. 12.)

- average temperature $T_i(ss)$ for current monthly billing period (1. 1. to 31. 12.)
- (12x) average temperature $T_i(ss)$ for 12 past monthly billing periods (1. 1. to 31. 12.)
- average temperature $T_i(ss)$ for current yearly billing period (only 1. 10. to 30. 4.)
- average temperature $T_i(ss)$ for past yearly billing period (only 1. 10. to 30. 4.)
- average temperature of environment $T_i(ss)$ for previous day
- number of changes to single sensor mode for current yearly billing period
- number of changes to single sensor mode for past yearly billing period
- number of changes to single sensor mode for current monthly billing period
- number of changes to single sensor mode for past monthly billing period
- measuring in summer season turned on (0=no, 1=yes)
- one way transmission in summer period turned off (0=no, 1=yes)
- temperature of radiator for beginning of summer season
- power of radiator
- coefficient K_c
- date of beginning of heating season (1-31. 1-12.)
- date of beginning of summer season (1-31. 1-12.)
- state of electronic seal
- date of breaking electronic seal
- total consumption at the time of breaking electronic seal
- error state (standard 0, else e.g. 2046)
- date of error state
- total consumption at the moment of error state
- current temperature of radiator sensor
- current temperature of environment
- current time of allocator
- total consumption
- date of beginning of measuring of total consumption
- average temperature of radiator sensor for previous day
- average temperature of environment sensor for previous day

3.1. CONSTRUCTION

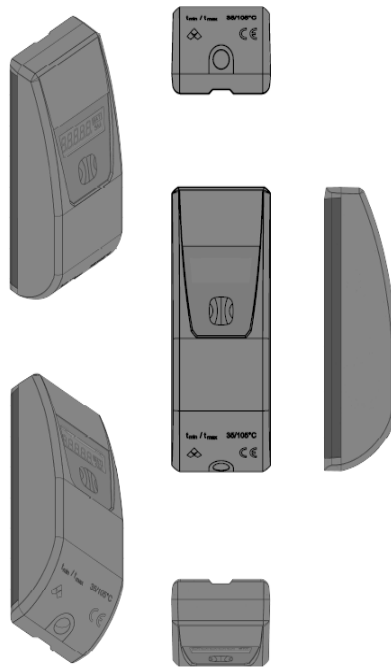
Electronic heat cost allocator E-ITN 40 complies with ČSN EN 834:2014.

Allocator consist of cover and printed circuit board covered with mounting plate. Mounting plate is bolted with cover and secured with latch and seal.

Cover, mounting plate, latch and seal are made from plastic material. There are marked values of the lowest and highest heating medium temperature, manufacturer's mark, type of the allocator, serial number (both as number and 2D data matrix) and optionally the partner's mark on the cover. The base plate is made of aluminium alloy to ensure of a good thermal contact with the radiator.

To install the heat cost allocator, place it at the upper end of the aluminium back plate, push down so that the locks in the housing fit in the aluminium back plate and push the bottom part of allocator towards back plate. Allocator is fastened to back plate by latch and seal. Now the heat cost allocator can only be uninstal after breaking the seal.

Device has an electrical circuitry with a 16-Bit microprocessor with extremely low current consumption, is equipped with radio transmitter and powered by lithium battery. The accuracy of the measuring circuit is independent of the battery voltage. The LCD-display has 5 large main digits separated by dots and special symbols.



3.2. FIRMWARE UPDATES

Firmware revision 30 April 2024.

E-ITN type 0101 products with serial number 0101-00205051 and above have new firmware. Firmware modifies and adds some configurable parameters. The changes affect parameters with IDs 40, 41, 42, 51, 75, 76, 77 and 78. New parameters ID 55 Average heater sensor temperature “when heated” Tt (ct) and ID 162 Average calculated ambient temperature for the annual bulling period have been added.

An overview of the setting parameters can be found at www.metra-su.cz/en after logging in.

As of 30 April 2024, all complaint (reconditioned) E-ITN 40 type 0101 will have new firmware version installed, regardless of the date of manufacture.

3.3. VARIANTS OF E-ITN 40 PACKETS

With the new firmware version, the packet variants of the transmitted data are also new. These are distinguished numerically.

In the previous version, i.e. devices with serial number up to 0101-00205051:

- 9 – Unencrypted proprietary protocol
- 10 – Encrypted proprietary protocol
- 11 – Unencrypted OMS
- 12 – Encrypted OMS

In the new version, i.e. devices with serial number 0101-00205051 and above:

- 13- Unencrypted proprietary protocol
- 14 – Encrypted proprietary protocol

- 15 – Unencrypted OMS
- 16 – Encrypted OMS

4. OPERATION MODES OF ALLOCATOR

4.1. OPERATION MODES

The allocator can be in four operation modes:

- working mode
- error mode

4.2. SUBMENU NAVIGATION

The allocator contains a simple submenu (depending on current operation mode), that allow to obtain additional information or perform other activities.

To switch between individual items of menu, push the button briefly. To enter the submenu, choose relevant item and hold the button (approximately 2 seconds) until --A-- appears on LCD. When you release the button, designation of the 1st submenu item appears. Move in menu by short presses of the button. If the button is not pushed for 30 seconds, the LCD returns to the main menu.

Activation process of item is the same as entering the submenu. Find the relevant item and hold the button (for approximately two seconds), till notice --A-- on the LCD appears.

Movement in options is the same – briefly press the button. Selected option confirmation as well – by long (approx. 2 s) press of the button, till notice --A-- appears on LCD.

4.3. WORKING MODE

In working mode, allocator performs temperature measurement, calculates the increase of valuecal (if measurement conditions are met), transmits measured data, updates real-time and makes some other actions in regular intervals.

4.3.1. Menu structure in working mode

If nothing is displayed press the button briefly.

Data shown on display.

Basic:

- **Serial number of allocator** (scrolling – moves 1 character per 1 sec., starts and ends with a space)
- **Start of billing period** (e.g.: u01.02.) o In submenu allocator test, error code, date of error, reading countdown (in sec).
- **Consumption for current annual billing period** (e.g. 65534)
- **Consumption for past annual billing period** (e.g. 65534 _{SM}) o In submenu annual consumption for year -2 to -5 year, switching by pressing button, shows value: scrolls 2018-2014
- **Consumption for current monthly billing period** (e.g. 3.2.7.6.7)
- **Consumption for past monthly billing period** (e.g. 3.2.7.6.7 _{SM}) o In submenu consumption for -2 to -24 month, switching by pressing button, shows values: scrolls 12.2019.-1.2018 and for 4 seconds a value shows e.g. 3.2.7.6.7

Optional data (sample unit shows all)

- **Power of radiator** (e.g. 1000.)
- **Kc value** (e.g. 1.000)
- **Current temperature of radiator sensor** (e.g. 27.65°)
- **Current temperature of environment** (e.g. 27.65° _{SM})
- **Maximum temperature of radiator sensor for past annual billing period** (e.g. $\bar{27.6}^{\circ}$)
- **Maximum temperature of radiator sensor for past monthly billing period** (e.g. $\underline{27.6}^{\circ}$)

- **Average temperature of environment for past annual billing period** (e.g. $\bar{27.6}^{\circ}\text{SM}$)
- **Average temperature of environment for past monthly billing period** (e.g. $_27.6^{\circ}\text{SM}$)
- **Date** (e.g. 20.01.)
- **Time** (e.g. 12-30)
- **Total consumption** (scrolled – moves 1 character per 1 sec., begins with character C)

Display turns off after 30 seconds of inactivity and returns to first menu item.

4.3.2. Last year of battery life

Battery lifetime is programmed in the microprocessor memory and the last year of battery lifetime is indicated on LCD by blinking of the special symbol: BAT. After finishing this time the symbol stays displayed permanently. Calculated battery lifetime is 10 years + 2 years reserve.

4.4. ERROR MODE

In error mode the notice Error is permanently displayed and allocator does neither measure temperatures, count the increase of consumption nor transmit measured data. Allocator just actualizes real time. Allocator switches from working mode to error mode automatically after registration of serious error (e.g. fault in A/D converter, when the power supply of microprocessor was interrupted and loss of data in RAM memory occurred, etc.).

Allocator backups important data to permanent memory daily. Data in this memory are saved even if the power supply is interrupted. Even in the case of battery failure these data are not lost. Saved data could be read by special tools. NFC chip has a memory. Into this memory is backed up current data every day. If E-ITN 40 stops working, you can read this memory using NFC.

5. OTHER INFORMATION ABOUT PRODUCT

5.1. ELECTRONIC SEAL REACTIVATION

The electronic seal is used for detection if allocator was removed from back plate – more in chapter 2. If you need to re-fit allocator (e.g. replace old radiator with new radiator), it is necessary to reactivate the seal.

1. Insert new latch into allocator. If use the old one, please check its condition, especially electro-conductive rubber.
2. Secure the latch with mechanical seal.
3. Read allocator with NFC
4. Install allocator to the radiator.

5.2. TRANSPORTATION

E-ITN 40 allocators can be transported under following conditions:

- devices can be transported by all usual covered means of transport
- devices must be in original package
- originally packed devices must be stored and secured to avoid mechanical damages during transportation
- devices can not be transported together with aggressive substances
- temperature during transportation from 0 °C to +55 °C
- relative humidity from 45 % to 75 %

5.3. STORAGE

E-ITN 40 is an electrical device and can be stored under these conditions:

- devices must be originally packed by manufacturer and individually stored in antistatic bags
- storage temperature from +10 °C to +30 °C
- relative humidity from 45 % to 75 %
- devices must be stored in clean covered areas without aggressive substances and stored properly to avoid mechanical damage

5.4. APPLICATION AND DISPOSAL



"This device is subject to a waste management in accordance with local legislation." More information on www.metra-su.cz

5.5. DEFECTS AND THEIR ELIMINATION

Any E-ITN 40 defect should be repaired by manufacturer only.

5.6. WARRANTY

If device is installed and handled according to manufacturer instructions mentioned in Installation and service manual, manufacturer provide warranty under the valid legislation unless agreed differently.

The warranty is void if device was used contrary to Installation and service manual or damaged:

- during transport or storage by customer or reseller
- when mounted or dismantled to the customer device
- because of improper handling or installation into other device than agreed in manual
- if the product was exposed to different environment than agreed in manual
- if mechanically or in other way damaged by user

6. ACCOMPANYING DOCUMENTATION

6.1. PACKING

Allocators are disassembled (allocator, back plates, mounting material) and packed in the boxes of max. 100 pcs. Packing sheet is included in every box with mark of the producer, device type, number of items and their serial numbers, packing date and the name of the operative who checked and packed the products. The lids of boxes are marked with label "THIS SIDE UP!". The boxes are non-returnable. Boxes are stored always cover up on the standard shipping pallets.

Electronic heat cost allocator E-ITN 40 is sensitive to static electricity. For this reason, each allocator is shipped in antistatic packaging. Antistatic package should be removed just before installation

E-ITN 40 INSTALLATION

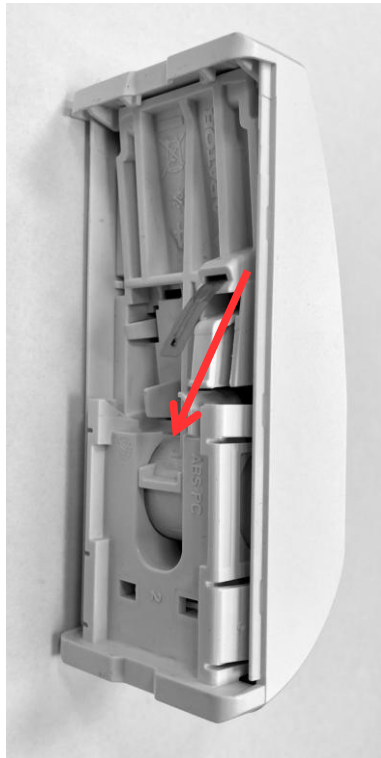
7. MOUNTING METHODS

7.1. ALLOCATOR INSTALLATION

The back plate is mounted on the radiator using mounting material in compliance with EN 834:2014 and with Installation and service manual. Mounting material is provided by manufacturer and supplied with allocator.

Installation can be done only by person professionally trained by the manufacturer.

When installing allocator, make sure the temperature sensor is pointed downwards.



Warning!

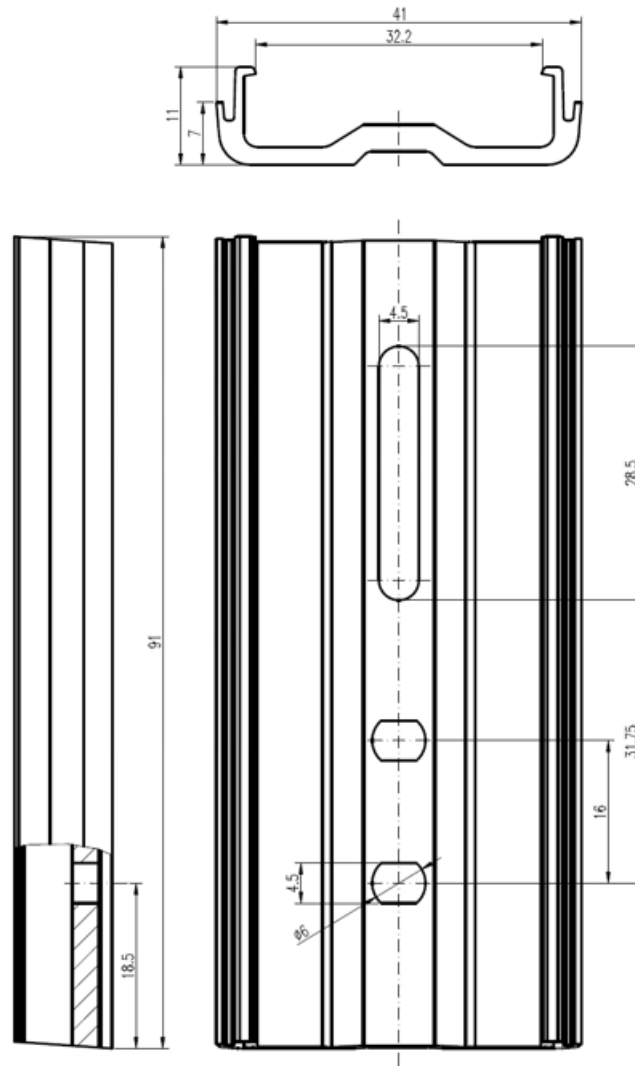
Static electricity is harmless for humans but can seriously damage electronic devices. When handling or installing the product follow these rules:

- discharge accumulated static electricity by touching the hand with a grounded metal object (e.g. radiator) before installation,
- keep the product in antistatic package until installation,
- never remove PCB from the housing.

Use only original parts or parts approved by the manufacturer for installation, pay attention to the tightening of mounting material specified torque (more in chapter 8.4).

7.2. ALLOCATOR BACK PLATE

The back plate is made of aluminium alloy and designed to have the best heat transfer from the radiator to the allocator. It is necessary to install back plate to the radiator with recommended mounting material to ensure the optimal thermal contact.



7.3. LIST OF INSTALLATION MATERIAL

Mounting material is used to install allocator to the radiator. Manufacturer does not guarantee the accuracy of coefficient Kc when used a different installation material.

Type	Mounting accessories content
0001	bolt M4x25 + serrated lock washer + clamp III
0003	bolt M4x35 + serrated lock washer + clamp III
0004	bolt M4x50 + serrated lock washer + clamp III
0005	bolt M4x115 + serrated lock washer + clamp III
0006	bolt M4x25 + serrated lock washer + clamp
0007	bolt M4x80 + serrated lock washer + clamp III
0008	2 pcs nut M3 special + 2 pcs serrated lock washer + clamp FONAL (8 mm)
0009	2 pcs screw DIN 7982 ST 2.2x16 shape Z
0010	2 pcs nut M3 special + 2 pcs serrated lock washer + clamp FONAL (10 mm)
0011	2 pcs nut M3 special + 2 pcs serrated lock washer + clamp FONAL (12 mm)
0012	2 pcs bolt M3x6 type G AIMg3 + 2 pcs serrated lock washer + 2 pcs nut M3 special
0051	2 pcs bolt M3x6 type G + 2 pcs serrated lock washer + 2 pcs nut M3 special
0052	2 pcs bolt M3x10 type G + 2 pcs serrated lock washer + 2 pcs nut M3 special
0053	2 pcs bolt M3x12 type G + 2 pcs serrated lock washer + 2 pcs nut M3 special
0054	2 pcs bolt M3x10 type G + 2 pcs serrated lock washer + 2 pcs nut M3 special + spacer
0055	bolt M3x6 type G + 2 pcs bolt M4x8 + nut M3 + spacer – tubular heating radiator
0056	bolt M4x25 + serrated lock washer + clamp III
0057	2 pcs bolt M3x8 type G DIN 32 501 ST 36-2 + 2 pcs serrated lock washer + 2 pcs nut M3 spec.

7.4. E-ITN 40 MOUNTING PLACE ON SEGMENTED AND PANEL RADIATORS

Place with suitable relation between the displayed value and the heat emission of the radiator over a sufficiently operating range must be determined for allocator installation. Place of installation must be determined according to the unified criteria in single billing (accounting) unit. E-ITN 40 installation must be permanently protected against manipulation.

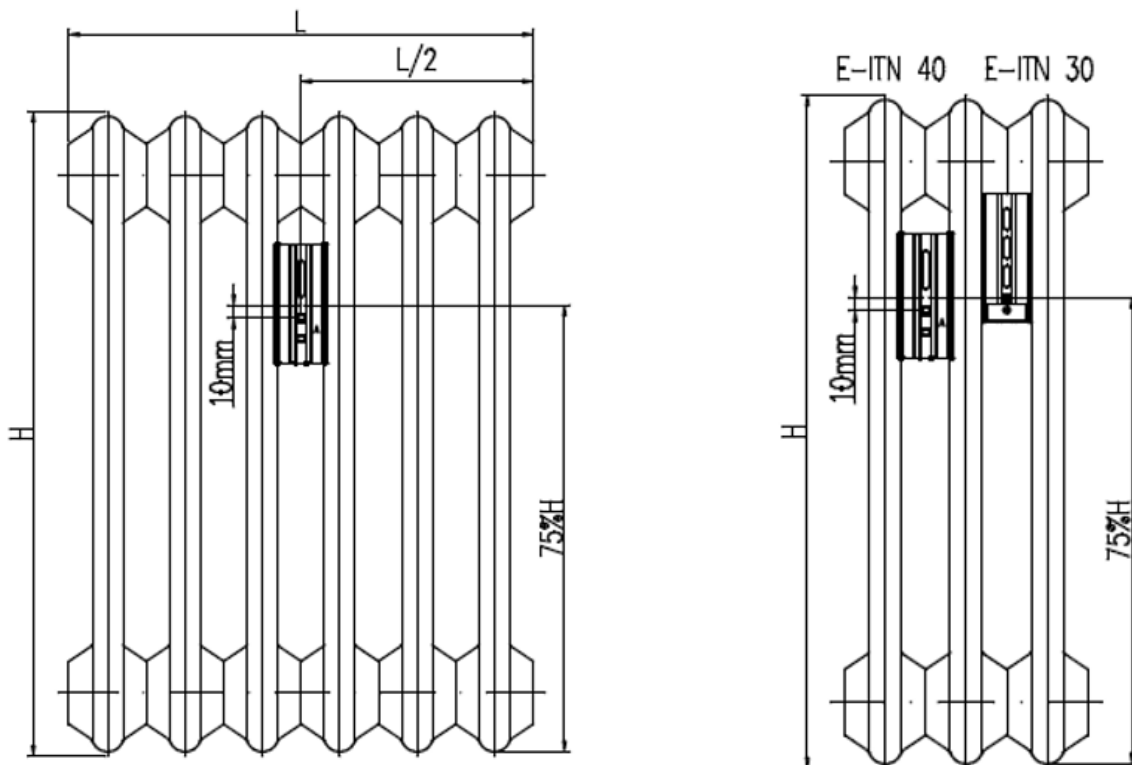
Warning: Failure to comply mounting procedure may result allocator malfunction!

7.4.1. Vertical position:

Install E-ITN 40 into 75% of the total radiator height (measured from bottom) – in relation to center of back plate. If the height of the radiator is less than 400mm install allocator to 50 % of total height. Variations of the mounting points height must not exceed ± 10 mm.

7.4.2. Horizontal position:

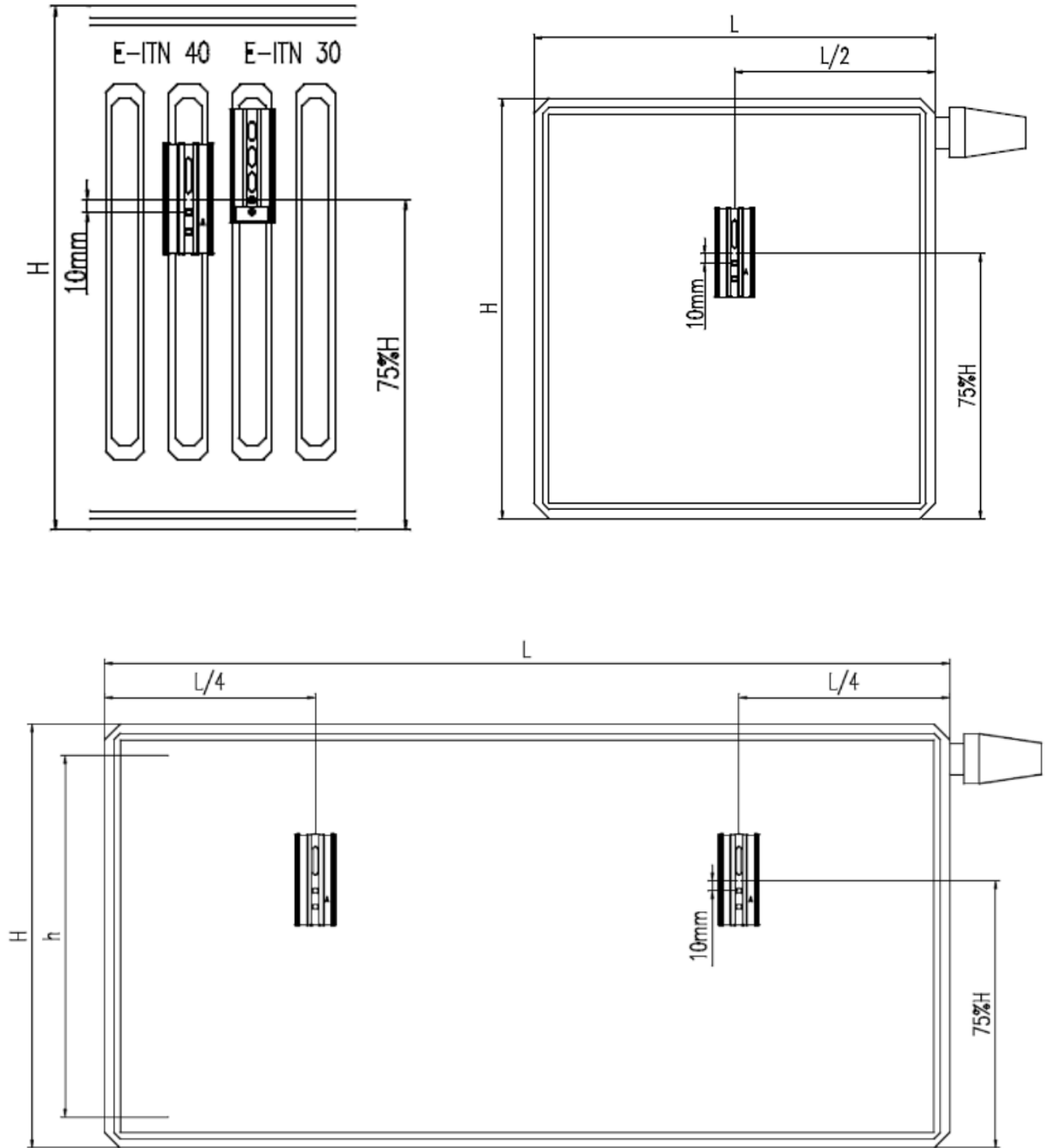
For both variants of vertical installation, place E-ITN 40 into the half of length L. In cause of odd number of the spaces, place E-ITN 40 into the gap closer to the end of the radiator, i.e. at radiator with 9 gaps place EITN 40 into gap 5. For an even number of gaps or recesses, place the E-ITN 40 in the gap closer to the end of radiator. E.g. at radiator with 10 gaps place E-ITN 40 into gap 6. On radiators with length $L > 2000$ mm or radiators with excessive nominal output install two E-ITN 40 placed in 25% of total radiator sized (measured from sides of radiator)



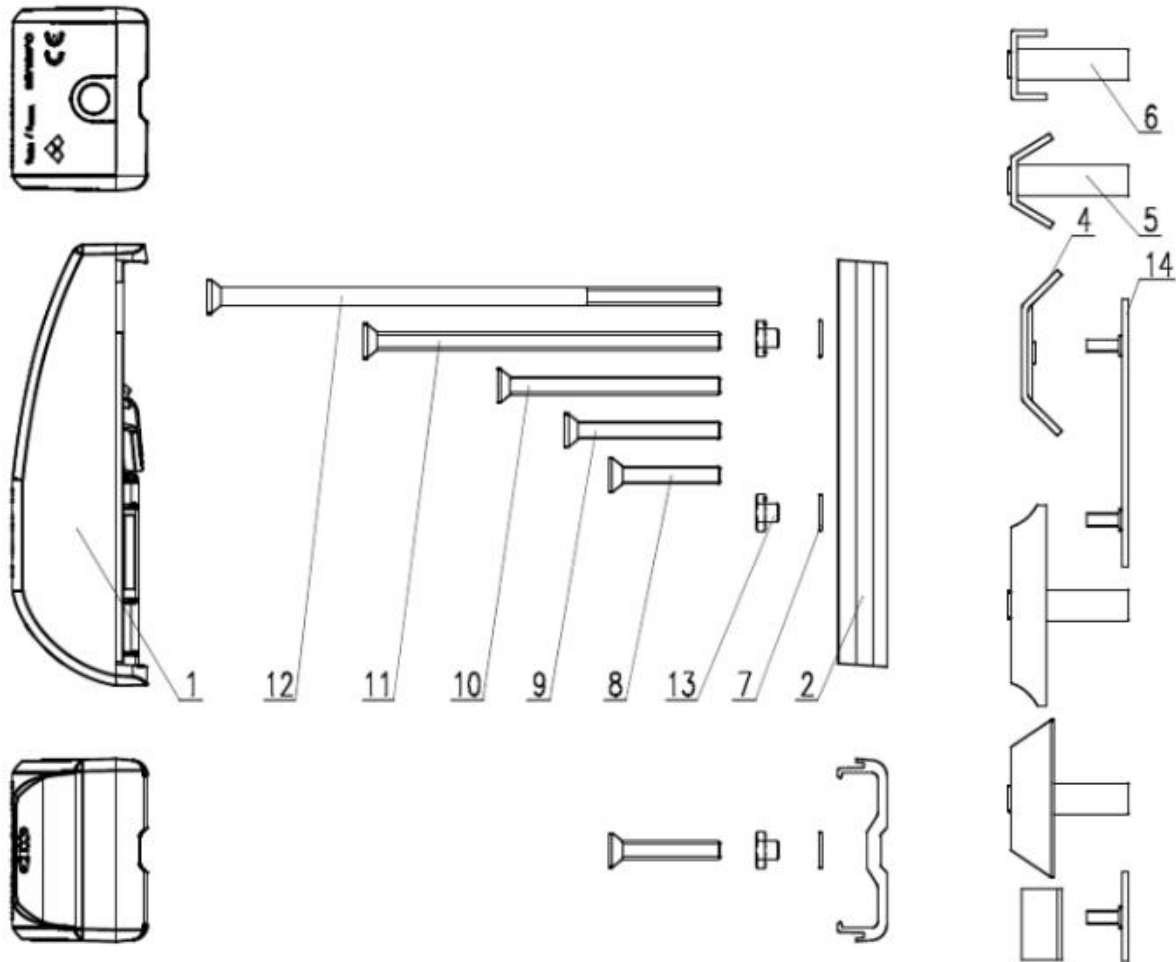
E-ITN 40

Manual for installation service and operation

M2025/02a



7.5. INSTALLATION ON SEGMENTED RADIATORS



- | | | | |
|---|-------------------------|----|--------------|
| 1 | Allocator body | 9 | Bolt M4x35 |
| 2 | Back plate | 1 | Bolt M4x50 |
| | | 0 | |
| 4 | Clamp | 11 | Bolt M4x80 |
| 5 | Clamp III | 1 | Bolt M4x115 |
| | | 2 | |
| 6 | Clamp IV | 1 | Nut M3 spec. |
| | | 3 | |
| 7 | Washer 4 ČSN 02 1746.25 | 1 | Clamp FONAL |
| | | 4 | |
| 8 | Bolt M4x25 | | |

7.5.1. Description of installation

E-ITN 40 back plate should be installed on the radiator with clamps and bolts as follows:

- place back plate into the final location and fix with clamp and bolt through the centre hole,
- tighten to a torque 1 Nm,
- place the allocator into the back plate profile groove from top, align it with the base plate and push allocator to connect it with the back plate.

When using cast iron radiator with a very rough surface (large grain) it is recommended to grind off these grains at the place where back plate will be installed.

After installation, installation protocol has to be filled up (including date of installation, room, type of the radiator, allocator serial number, etc.).

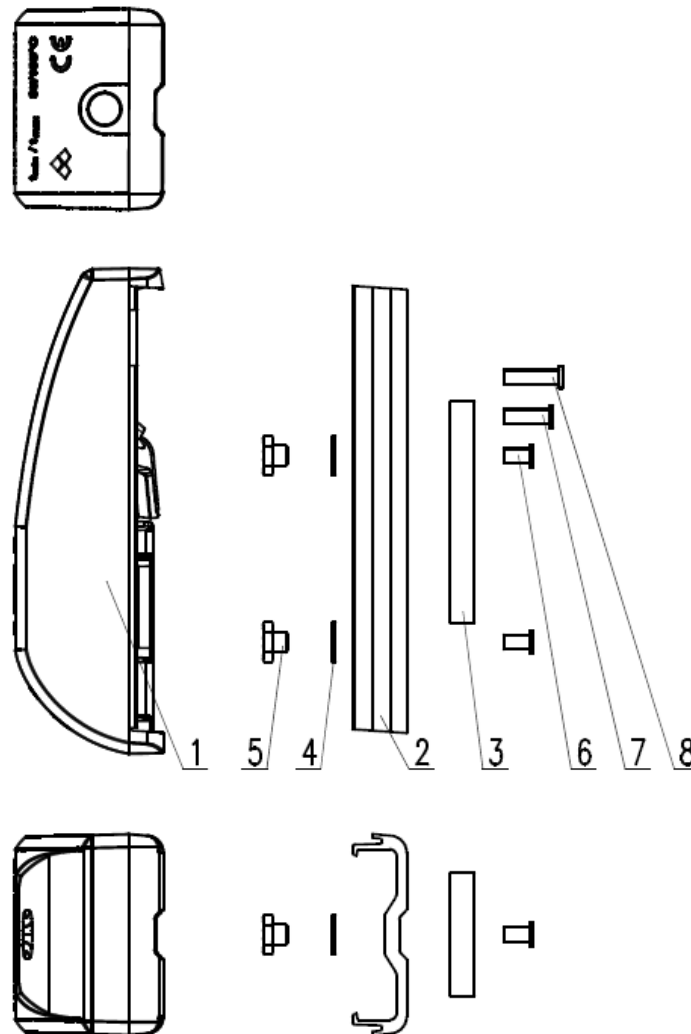
When using cast iron radiator with a very rough surface (large grain) it is recommended to grind off these grains at the place where back plate will be installed.

After installation, installation protocol has to be filled up (including date of installation, room, type of the radiator, allocator serial number, etc.).

7.5.2. Installation differences

- a) When installing on the radiators with difficult access (KALOR 3, TERMO) follow these steps:
 - insert the mounting bolt through centre hole of the back plate and screw it on several threads to the clamp,
 - slide prepared set from the top between radiator segments (clamp is in upright position) and place in the mounting height,
 - tighten the back plate to a torque 1 Nm.
- a) For installation on radiators with larger distance between the segments (Svratouch radiator):
 - use clamp IV and insert the spacer 45 under E-ITN 40 back plate
- a) For radiators with solid and long cells, as KUVAL radiators:
 - use a screw with a length 80 mm

7.6. INSTALLATION ON PANEL RADIATORS



- | | | | |
|---|----------------|---|--------------|
| 1 | Allocator body | 5 | Nut M3 spec. |
| 2 | Back plate | 6 | Bolt M3x6 |
| 3 | Waher | 7 | Bolt M3x10 |
| 4 | Washer 4 | 8 | Bolt M3x12 |

7.6.1. Description of installation

E-ITN 40 back plate should be installed on the panel radiators with two welded bolts thread M3 and special nuts as follows:

- mark the place for both welding bolts on the radiator,
- remove the paint within the diameter of 10 mm on the marked places,
- weld the bolts to the radiator with two-head welding pistol,
- if one-head welding pistol is used, second bolt have to be in distance 39 ± 1 mm towards the upper edge of the radiator, remove the paint within the diameter of 10 mm on the marked place,

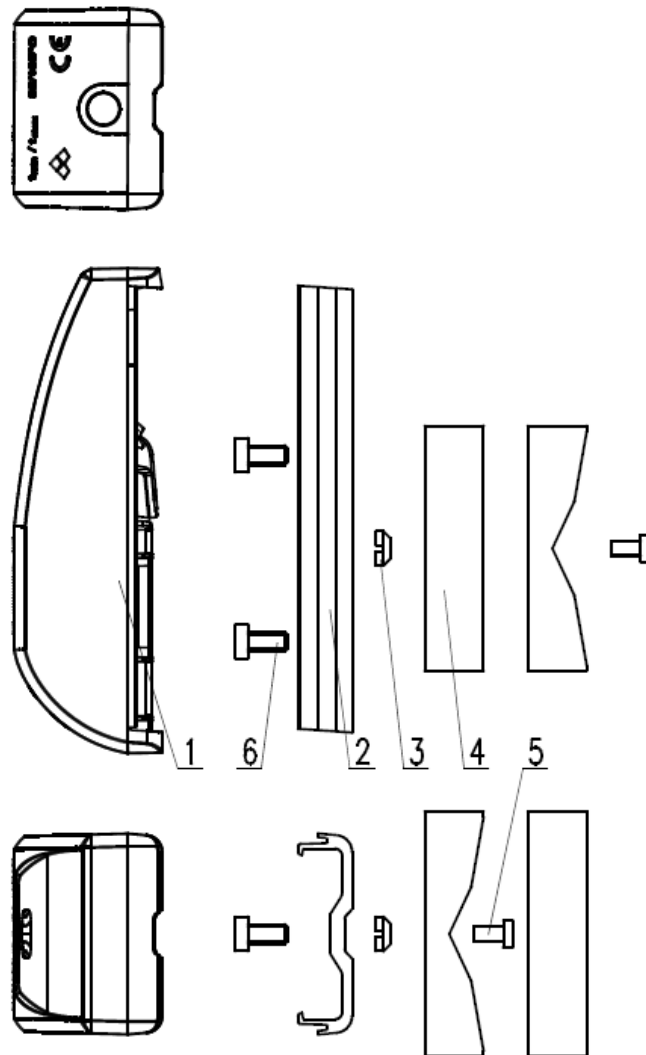
- attach back plate to the bolts and than to the radiator, screw the nuts to the bolts with socket wrench M7,
- tighten the nuts to a torque 1 Nm,
- place the allocator into the back plate profile groove from top, align it with the base plate and push allocator to connect it with the back plate.

After installation, installation protocol have to be filled up (including date of installation, room, type of the radiator, allocator serial number, etc.)

Warning!

Televisions or other devices with screen must be apart at least 2-3 meters from the place welding. Devices must be switched off and disconnected from electrical network. Shock during welding can negatively affect pacemaker. It is necessary to warn the user and explain him requirement of his absence during installation.

7.7. INSTALLATION ON HORIZONTAL AND VERTICAL REGISTERS



- | | | | |
|---|----------------|---|--|
| 1 | Allocator body | 4 | Spacer - registr for \varnothing 30 - 110 mm |
| 2 | Back plate | 5 | Bolt M3x6 |
| 3 | Nut M3 | 6 | Bolt M4x8 |

7.7.1. Installation description

E-ITN 40 back plate should be installed on the tubular radiators with spacer, welded bolt M3x6 and nut M3, and two bolt M4x8:

- mark the place for welding bolt on the radiator,
- remove the paint within the diameter of 10 mm on the marked place to see metal surface,
- weld bolt M3x6 onto the register pipes with a one-head welding pistol,
- place the spacer on the bolts tighten to a pipe that front surface is always perpendicularly to the ground,
- screw the back plate in vertical position to the spacer with two bolts M4,
- place the allocator into the back plate profile groove from top, align it with the base plate and push allocator to connect it with the back plate.

7.7.2. Proper E-ITN 40 installation on different register types

Horizontal tubes - bare and ribbed:

- I. Ribbed tube straight with $l \leq 6$ m and bare with $l \leq 12$ m
 - 1x E-ITN 40 in the centre of the tubular element

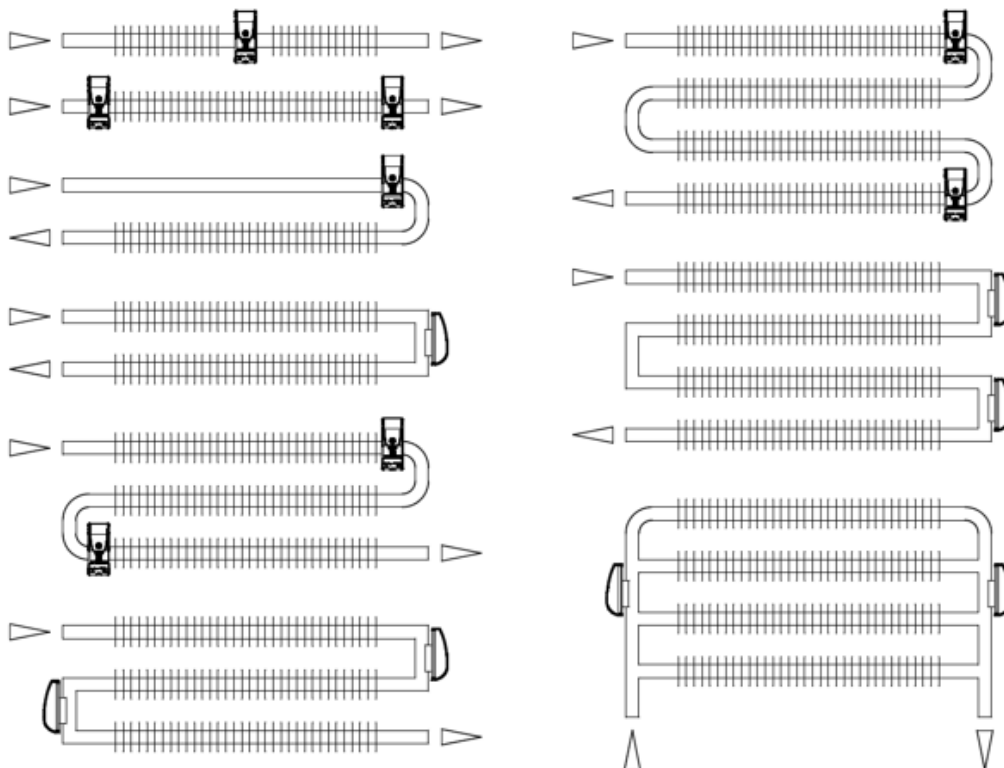
- I. Ribbed tube straight with $l > 6$ m and bare with $l > 12$ m
 - 2x E-ITN 40 in the beginning and the end of the tubular element

- I. Ribbed or bare tube with one curve
 - 1x E-ITN 40 in the beginning of the tubular element arch
 - in case of register welded into the frame, place E-ITN 40 on a vertical tube

- I. Ribbed or bare tube with two curves
 - 2x E-ITN 40 in the beginning of the upper curve and in the end of the lower curve
 - in case of register welded into the frame, place E-ITN 40 on a vertical tube

- I. Ribbed or bare tube with more than two curves
 - 2x E-ITN 40 always in the beginning of the upper curve and in the end of the lower curve
 - in case of register welded into the frame, place E-ITN 40 on a vertical tube

- I. Ribbed or bare tubes connected in parallel
 - 2x E-ITN 40 into the middle or approximately to 75% (odd number of tubes) of the height of the tubular element



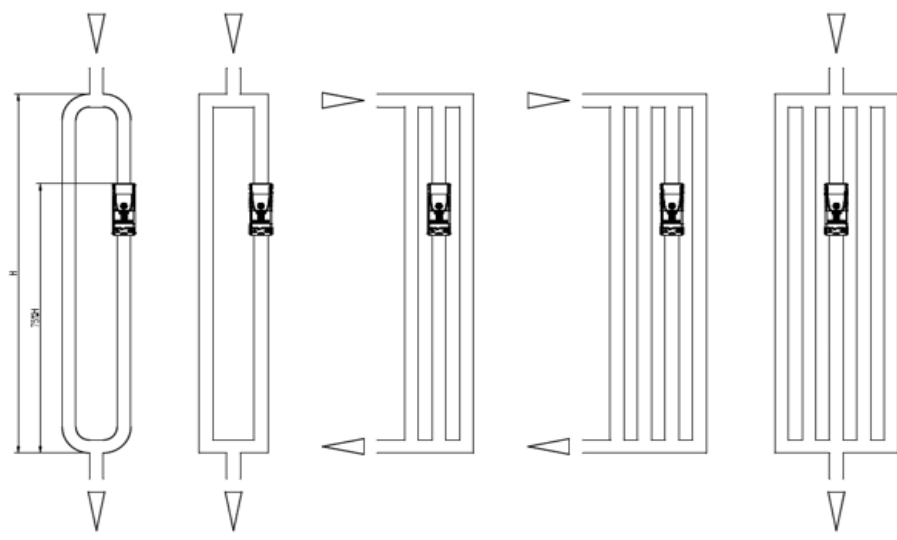
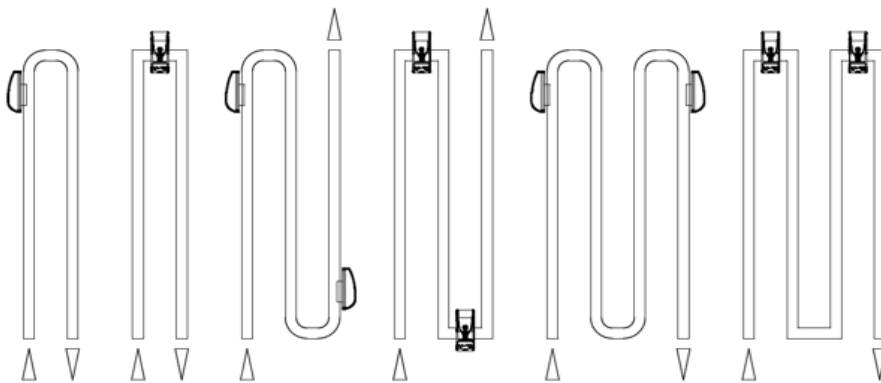
Vertical bare tubes:

- I. Bare tube with one curve
 - 1x E-ITN 40 in the beginning of the tubular element curve
 - in case of register welded into the frame, place E-ITN 40 on a horizontal tube

- I. Bare tube with two curves
 - 2x E-ITN 40 in the beginning of the upper curve and in the end of the lower curve
 - in case of register welded into the frame, place E-ITN 40 on a horizontal tube

- I. Bare tube with more than two curves
 - 2x E-ITN 40 in the beginning of the first curve and in the end of the (last) upper curve
 - in case of register welded into the frame, place E-ITN 40 on a horizontal tub

- IV. Two or more small tubes connected in parallel
 - 1x E-ITN 40 in 75% of the total height and nearest to the centre of tubular element



Note: If your register does not match any of the listed patterns, ask for information manufacturer.

8. EXTERNAL SENSOR FOR E-ITN 40

8.1. DEVICE DESCRIPTION

The installation of the indicator with external sensor consists of mounting two items, namely the indicator and the sensor separately. The indicator is mounted on a wall-mounted base. The sensor is mounted on an aluminium alloy base plate which is mounted on the heating element.

8.2. APPLICATION

The recommended area of installation is on single-pipe horizontal or vertical heating systems and two-pipe heating systems with a lowest mean design temperature of the transfer medium greater than or equal to 35°C and highest mean design temperature of the heat transfer medium less than or equal to 105°C and where the indicator cannot be installed due to its size or long-term adverse thermal conditions.

Note: When an external sensor is connected to the E-ITN 40, "E.SenS" will appear on the indicator display and the indicator will automatically switch to external sensor mode. All historical values are deleted!!

8.3. TECHNICAL DATA

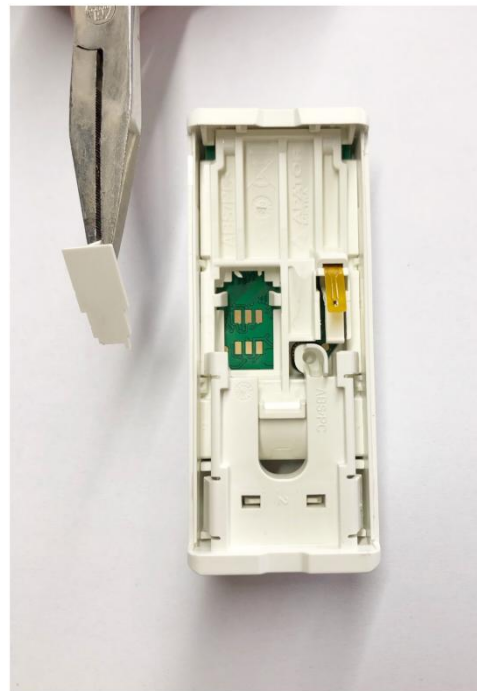
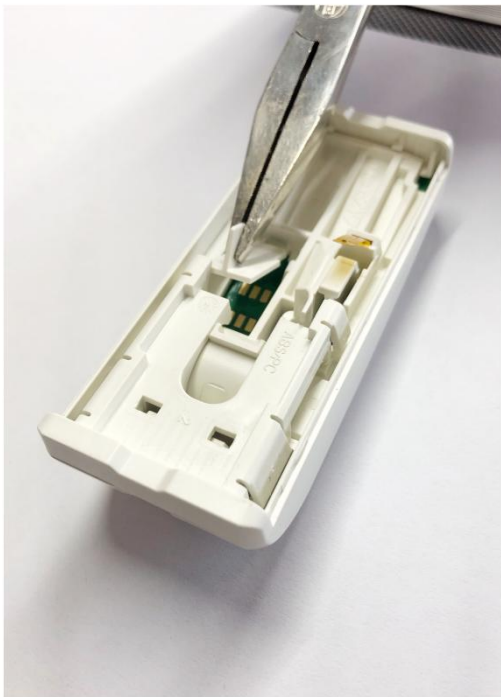
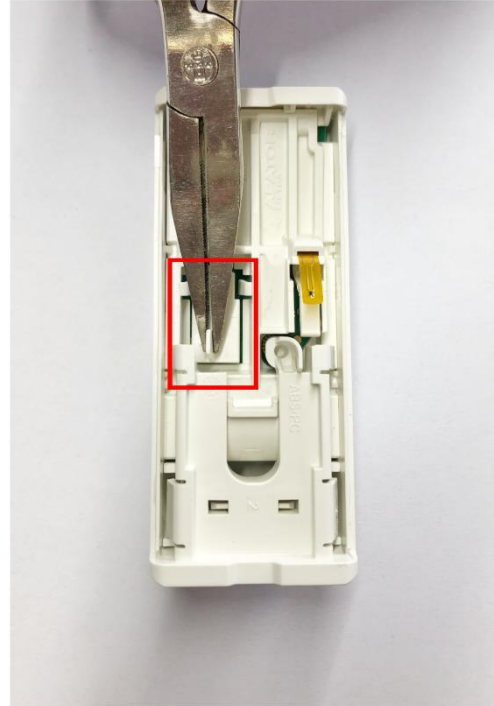
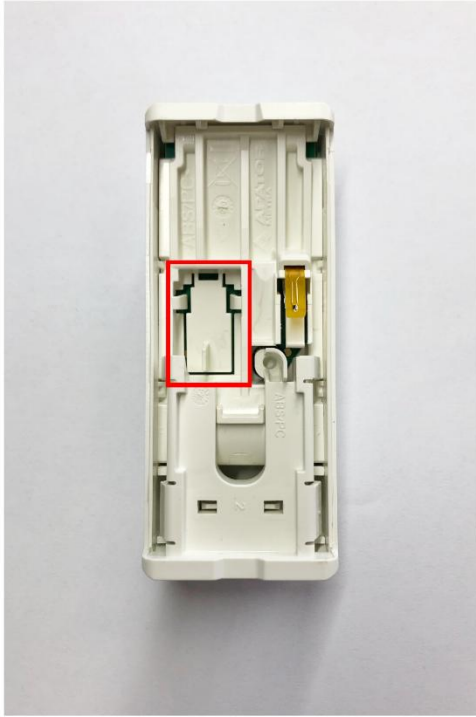
Conditions of registration	Sensor temperature at the heating element $\geq 23^{\circ}\text{C}$ and temperature difference between the mean temperature of the heat transfer medium and the ambient temperature $\leq 5\text{K}$ (according to EN 834:2013), different conditions for registration in summer
Application	$t_{\text{min}} \geq 35^{\circ}\text{C}$ (min temperature of the heat transfer medium) $t_{\text{max}} \leq 105^{\circ}\text{C}$ (max temperature of the heat transfer medium)
Function control	Automatic, can be activated and controlled by the user
Electronical seal	Yes
Protection rate	IP 42

8.4. PREPARING THE INDICATOR FOR INSTALLATION

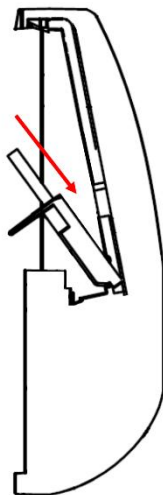
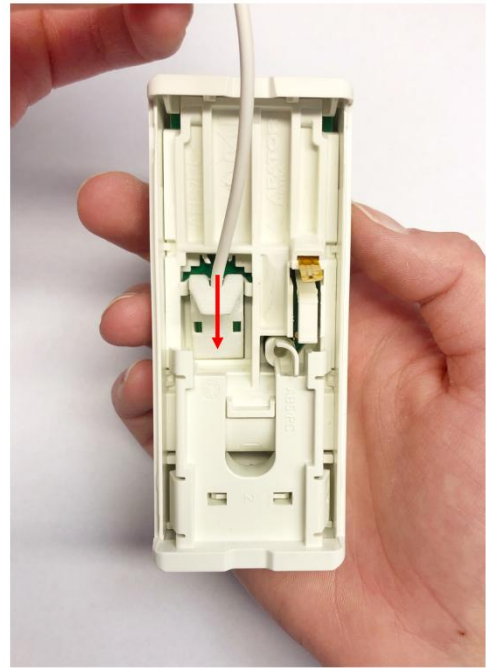
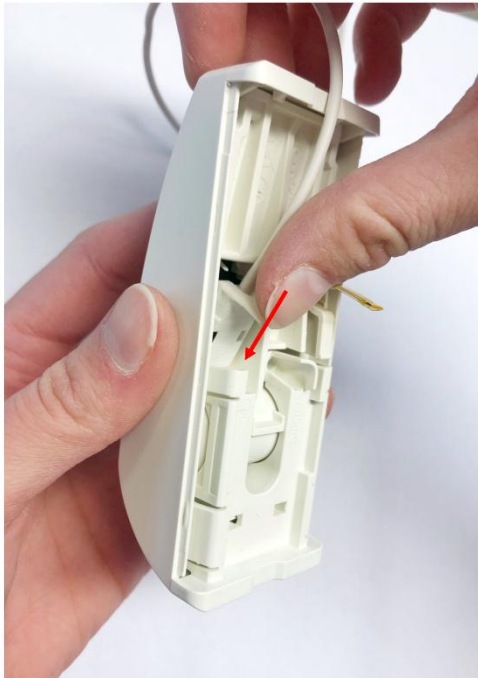
Before installation, the E-ITN 40 must be connected to an external sensor. To make the connection, remove the plastic cover from the back of the indicator and then connect the cable end of the external sensor. Before installation, the external sensor must be connected to the E-ITN 40. To connect, remove the plastic cap from the back of the indicator and then connect the external sensor connector. See the process below.

The process:

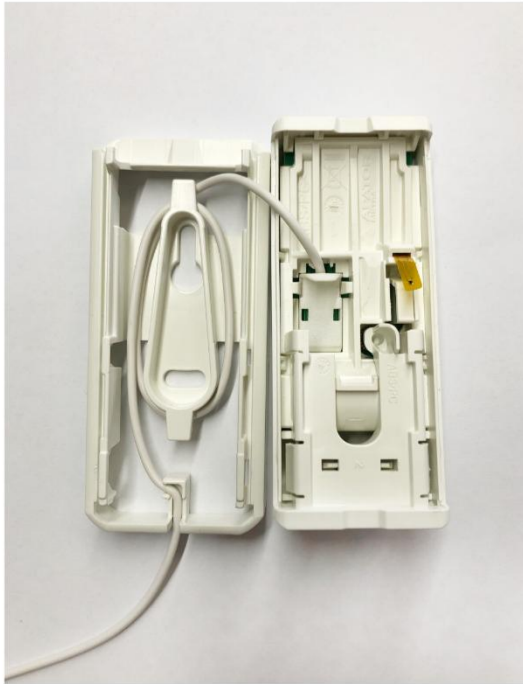
1. Remove the plastic cap on the back of the E-ITN 40



2. Connect the connector of the external sensor to the indicator according to the photo below.



3. Wind the excess cable of the external sensor onto the center coil of the plastic base as shown in the picture, making sure to wind the cable in the correct direction. Route the cable out of the plastic base through the locking groove to secure the cable in the instrument against pulling out.



4. Place the E-ITN 40 indicator on the plastic base first and then snap the bottom part tot the plastic base. When snapping in, take care to position the cable so that the instrument can be snapped without damaging the cable.



8.5. INSTALLATION AND MOUNTING METHODS

Installation consists of mounting the E-ITN 40 indicator and the external sensor separately. The indicator is mounted on a base which is fixed to the wall. The sensor is screwed onto the aluminium base plate, then the aluminium plate is secured with a screw and a seal. The sensor can be mounted on the heating element. For the different types of heating elements, the mounting material is specified by the manufacturer and is included in the delivery of the indicators with external sensor.

Installation may only be carried out by a person trained by the manufacturer.

Warning!

Static electricity, which is harmless to humans, can seriously damage electronic equipment. Therefore, observe the following rules when handling and installing the product:

- Before assembly, discharge your accumulated static charge by touching grounded metal object (e.g. a heating element) with your hand
- Leave the product in its anti-static packaging until assembly
- Do not touch the circuit board before or during assembly
- Avoid contact of the circuit board with other objects, especially metal
- Never remove the circuit board from the housing
- Do not touch metal parts (e.g. temperature sensor housing) when handling the product

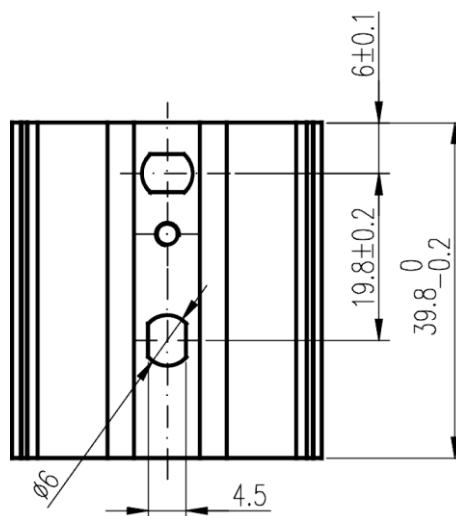
When assembling, use only original or manufacturer approved parts, paying attention to the correct tightening of the assembly material with the prescribed tightening torque.

8.6. SENSOR BASE PLATE

The base plate is made of aluminium alloy and serves to transfer the heat from the heating element to the sensor itself as efficiently as possible. The base plate must be fixed to the heating element with the prescribed mounting material to ensure optimum thermal contact between the sensor and the radiator.

The standard base plate is supplied with mounting holes.

In agreement with the manufacturer, it is possible to produce a customized version of the base plate, which allows mounting e.g. on previously installed (so called "shot") screws on plate heating elements.



8.6.1. Overview of assembly material

The mounting material is used to attach the indicator base plate to the heating element. When installing the indicator using other than the prescribed mounting material, the manufacturer cannot guarantee the accuracy of the evaluation coefficient Kc.

Marking	Contents of assembly material
0001	1pc screw M4x25 + 1pc serrated lock washer + 1pc clamp III
0002	1pc screw M4x50 + 1pc serrated lock washer + 1pc clamp IV + 1pc spacer 45
0003	1pc screw M4x35 + 1pc serrated lock washer + 1pc clamp III
0004	1pc screw M4x50 + 1pc serrated lock washer + 1pc clamp III
0005	1pc screw M4x115 + 1pc serrated lock washer + 1pc clamp III
0006	1pc screw M4x25 + 1pc serrated lock washer + 1pc clamp
0007	1pc screw M4x50 + 1pc serrated lock washer + 1pc clamp
0008	1pc screw M4x80 + 1pc serrated lock washer + 1pc clamp III
0009	2pcs nut M3 spec. + 2pc serrated lock washer + 1pc clamp FONAL (8 mm)
0010	2pcs bolt DIN 7982 ST 2.2x16 Z shape
0011	2pcs nut M3 spec. + 2pc serrated lock washer + 1pc clamp FONAL (10 mm)
0012	2pcs nut M3 spec. + 2pc serrated lock washer + 1pc clamp FONAL (12 mm)
0020	2pcs nut M3 spec. + 2pc serrated lock washer + 1pc clamp FONAL (20 mm)
0051	2pcs screw M3x6 type G AlMg3 + 2pc serrated lock washer + 2pcs nut M3 spec.
0052	2pcs screw M3x6 type G + 2pc serrated lock washer + 2pcs nut M3 spec.
0053	2pcs screw M3x10 type G + 2pc serrated lock washer + 2pcs nut M3 spec.
0054	2pcs screw M3x12 type G + 2pc serrated lock washer + 2pcs nut M3 spec.
0055	2pcs screw M3x10 type G + 2pc serrated lock washer + 2pcs nut M3 spec. + 1pc clamp
0056	2pc screw M3x6 type G + 2pcs screw M4x8 + 1pc nut M3 + 1 pc washer - registr
0057	2pc screw M3x8 type G + 2pc serrated lock washer + 2pcs nut M3 spec.
0058	2pc screw M3x33 mixed + 2pc serrated lock washer + 2pcs nut M3 spec.

8.6.2. Mounting location of the E-ITN 40 indicator with external sensor on panel and plate heaters

Panel heating elements

In general, the location for mounting the external sensor on the heating element shall be chosen where there is a relationship between the measured consumption values and the thermal performance of the heating element over a sufficiently wide operating range.

Within a single billing unit, the attachment location shall be determined according to uniform criteria. The attachment of the E-ITN 40 indicator with external sensor to the heating element shall be permanently tamper-proof.

Warning: Failure to comply with the installation conditions may result in malfunction of the indicator!

Vertical positioning

The external sensor for the E-ITN 40 indicator is positioned at 75% of the overall height of the heating element (measured from below), relative to the bottom opening of the sensor base plate with a tolerance of max. +/- 10mm. The indicator is installed at a minimum distance of 500 mm from the heating element on the side not affected by the supply pipe and at the same height from the floor as the external sensor with a maximum vertical tolerance of +/- 100mm. It must never be mounted above the level of the top edge of the heating element and must be stopped.

Horizontal positioning

In the case of cellular and panel heater an odd number of cells, gaps or depressions, the external sensor is installed in the middle of the length of the heater L. In the case of an even number of cells, gaps or depressions, it is placed closer to the end of the heater, e.g. in a 10 cells heater between 5th and 6th cell.

On heating elements with length $L > 2000$ mm or on elements with excessive heat outputs, 2 external sensors must be installed.