

MANOTHERM MTCC 60

DESCRIPTION

Manometer consists of plastic casing, manometric system for pressure measurement and thermometric system for temperature measurement. Systemes are placed on separate base plate.

INSTALLATION AND MAINTENANCE

Manotherm installation is done by inserting the manotherm head into the hole with dimensions as mentioned in dimensional drawing, by connecting the pressure sensor to pressure source and fastening the cap screw and by inserting the temperature sensor in a thermometer well.

Manometer head can be used in any position. To avoid capillary vibration it is necessary to fix it at two or more points approximately equally spaced along the capillary. The manotherm does not require any maintenance.



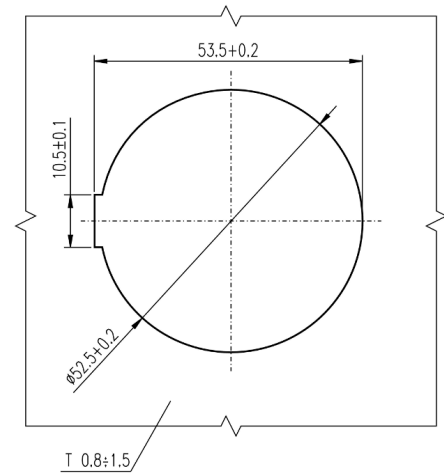
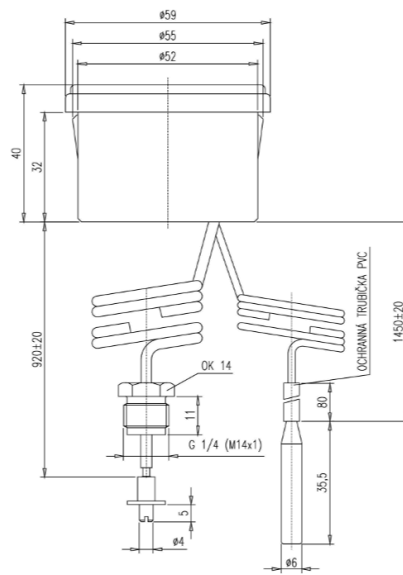
TECHNICAL DATA

Thermometric part	
Measuring range	20 to 100°C
Scale range	0 to 120°C
Scale division	2K
Accuracy	±4% from scale range
Sensor dimension	∅ 6x35,5 mm
Time constant	15 s
Capillary length	1450 mm
Minimal bending radius of capillary	$R_{min} = 5\text{mm}$
Manometric part	
Scale range	0-4 bar
Scale division	0,1 bar
Accuracy class	±2,5% from scale range
Sensor dimension	M14x1 or G1/4
Capillary length	920 mm

ACCESSORIES

Clack valve ZV4.x (not part of delivery).

TECHNICAL DRAWINGS



CONTACTS

APATOR METRA s.r.o.

Havlíčková 919/24

787 01 Šumperk

Czech Republic

Tel.: +420 583 718 261

E-mail: prodej@metra-su.cz

Web: www.metra-su.cz

Your distributor:

The manufacturer reserves the right to change design, technical specifications and accessories without prior notice.

K2024/03a