

THERMOSTAT TH 20

DESCRIPTION

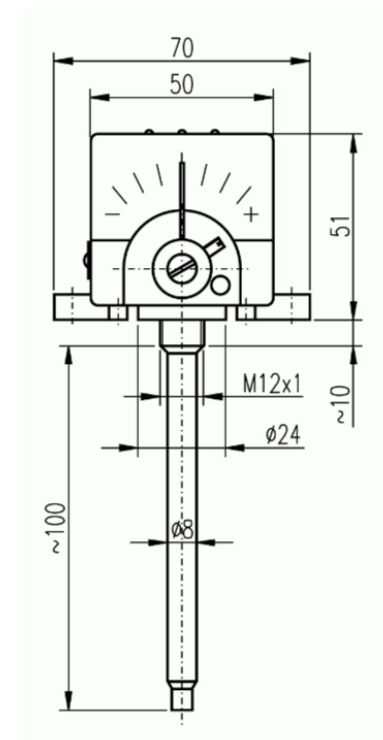
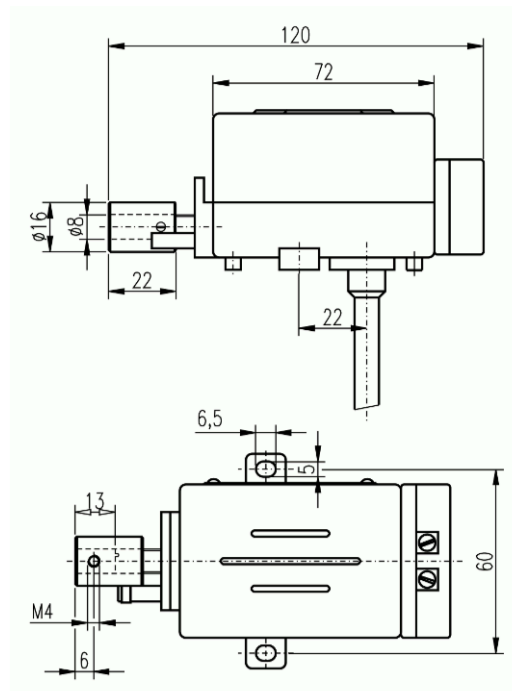
Thermostat consists of a stem and a switch head. The stem is formed by dilatation tube and invar rod. The switch element is attached to a swinging right-angled bridge held by two spiral springs. Position of the bridge against invar rod can be changed by regulation knob. Switch mechanism itself consists of two joint springs. The thermostat can be mounted using two holes at its base plate. Distance between bottom part of the switch head and side of the body should be approximately 2 cm. This space should be filled by insulation material so the temperature of the switch head does not exceed 120°C.



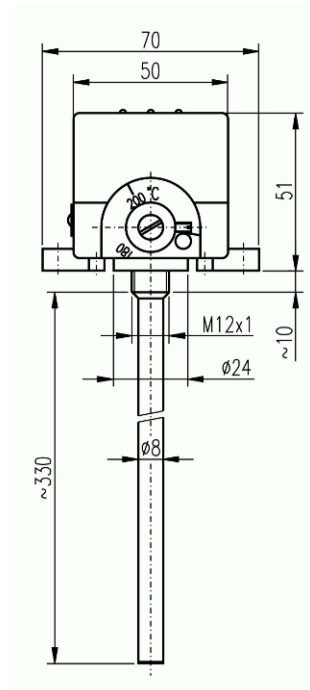
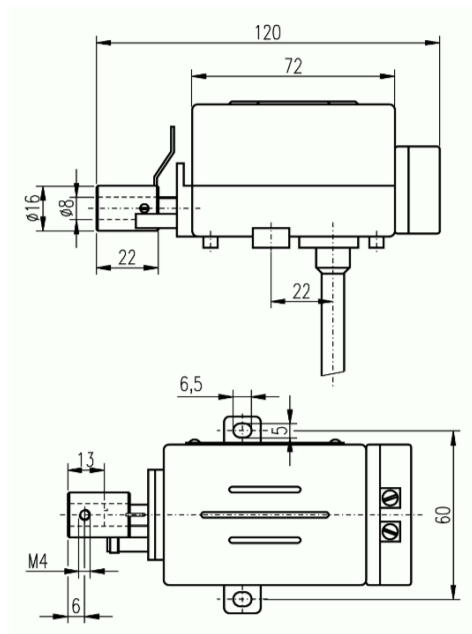
TECHNICAL DATA

Control range	80°C to 320°C
Rated voltage, rated current	240 V, 10 A AC
Setting accuracy	±16°C in 200°C
Setting difference	min. 1k, max. 12K
Stem length	100, 330 mm
Weight	approx. 0,45 kg
Lifetime	10 000 cycles

TECHNICAL DRAWINGS



TECHNICAL DRAWINGS



CONTACTS

APATOR METRA s.r.o.

Havlíčková 919/24
787 01 Šumperk
Czech Republic

Tel.: +420 583 718 261
E-mail: prodej@metra-su.cz
Web: www.metra-su.cz

Your distributor:

The manufacturer reserves the right to change design, technical specifications and accessories without prior notice.

K2024/03a