

Manotherm MTCC 60

MTCC 60



Description

Manometer consists of plastic casing, manometric system for pressure measurement and thermometric system for temperature measurement. Systems are placed on separate base plate.

Installation and maintenance

Manotherm installation is done by inserting the manotherm head into the hole with dimensions as mentioned in dimensional drawing, by connecting the pressure sensor to pressure source and fastening the cap screw and by inserting the temperature sensor in a thermometer well. Manometer head can be used in any position. To avoid capillary vibration it is necessary to fix it at two or more points approximately equally spaced along the capillary. The manotherm does not require any maintenance.

Technical data

Thermometric part

Measuring range 20 to 100°C

Scale range 0 to 120 °C

Scale division 2 K

Accuracy ± 4 % from scale range

Sensor dimension $\varnothing 6 \times 35,5$ mm

Time constant 15 s

Capillary length 1 450 mm

Minimal bending radius of capillary $R_{\min} = 5$ mm

Manometric part

Scale range 0-4 bar

Scale division 0,1 bar

Accuracy class $\pm 2,5$ % from scale range

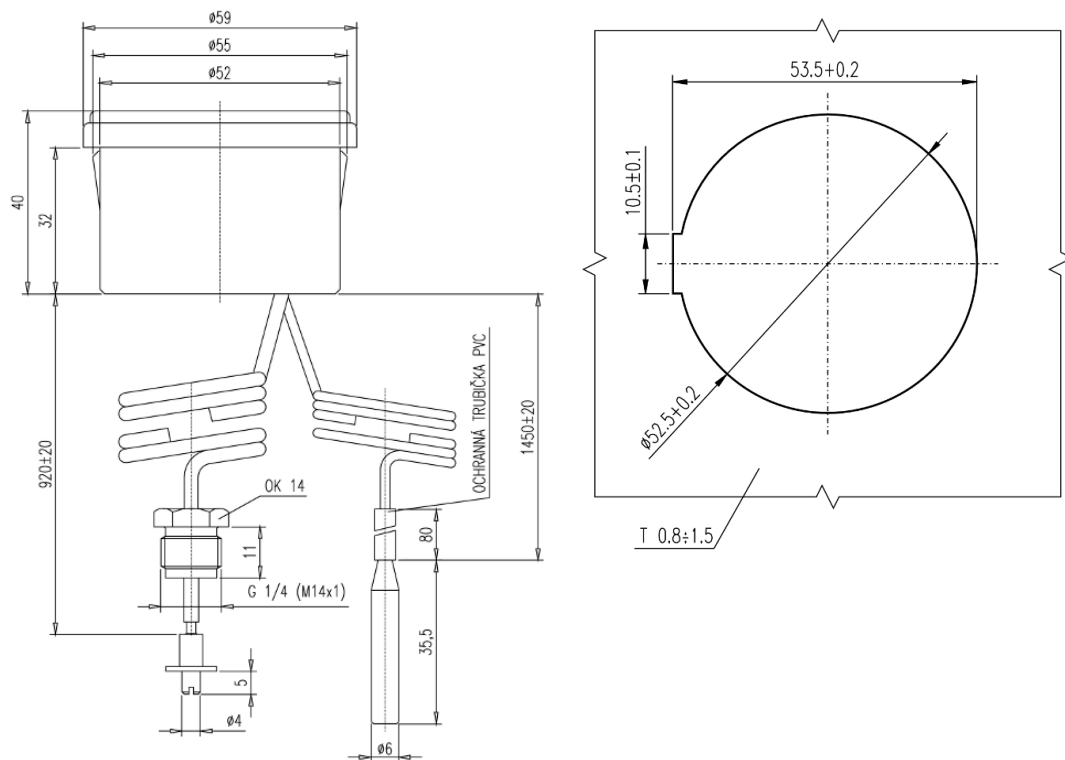
Sensor dimension M14x1 or G1/4

Capillary length 920 mm

Accessories

Clack valve ZV4.x (not part of delivery).

Technical drawings



Contacts

APATOR METRA s. r. o.

Havlíčková 919/24

787 01 Šumperk

Czech Republic

Tel.: +420 583 718 261

Fax.: +420 583 718 150

E-mail: prodej@metra-su.cz

WWW: www.metra-su.cz

Your distributor:

The manufacturer reserves the right to change design, technical specifications and accessories without prior notice.