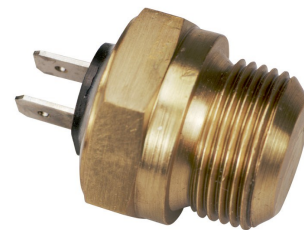


Thermostat TH 470

TH 470



Description

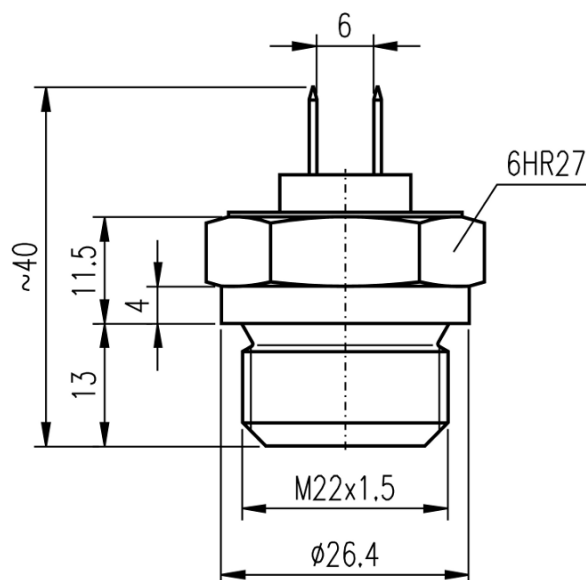
Thermostat TH 470 for additional cooling is operated by changes of arching of bimetallic spherical cap (bimetallic membrane in following text). Arching of bimetallic membrane is changed by environment temperature and this change is transferred to thermostat switch mechanism. Thermostat TH 470 is made as one unit. Sensor and the electrical switch system are assembled, adjusted and enclosed in the thermostat body. Thermostat is installed into specified hole in the cooling system of engine. To install it, use thread M 22x1.5 on the thermostat body and hexagon head OK 27. Thermostat is designed for single-wire circuit. Thermostat head with flat pins is connected permanently with thermostat body.

Thermostat is supplied with sealing ring diameter 22x27. If corrosion protection of connecting terminals by cover filled with plastic lubricant is required, specify it in order as Terminals cover.

Technical data

Switch-on temperature	95 °C ±3 °C
Switch-off temperature	> 80 °C
Rated contact load	12 V, 8 A DC
Connecting terminals	flat pins 6.3, ČSN EN 612 10
Weight	approx. 55 g
Lifetime	10 000 cycles

Technical drawings



Contacts

APATOR METRA s. r. o.

Havlíčková 919/24
787 01 Šumperk
Czech Republic

Tel.: +420 583 718 261
Fax.: +420 583 718 150
E-mail: prodej@metra-su.cz
WWW: www.metra-su.cz

Your distributor:

The manufacturer reserves the right to change design, technical specifications and accessories without prior notice.