

Thermometer wells



Thermometer wells are intended for protection of thermometer stem against environment influences. Wells are manufactured in several designs: steel wells cataphoretic plated, chromium-plated or made from combination of brass (socket) / copper (stem).

Weld-on pieces are addition to wells.

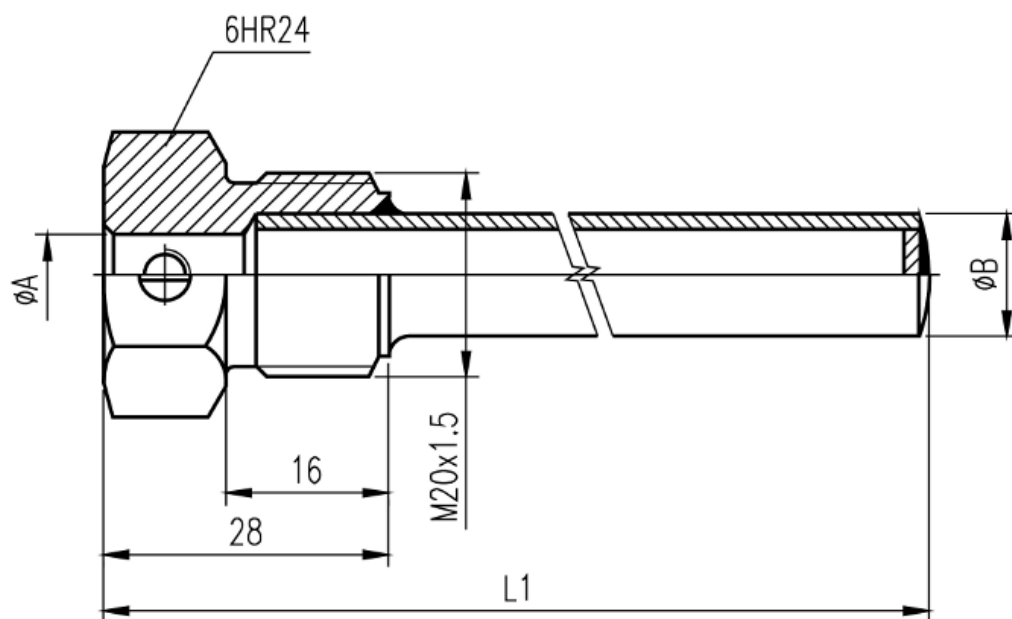
Description

Thermometer well is intended for installation in designated device (e.g. electrical boiler, water heater). Installation is done by screwing the well neck to device coat using suitable sealing. To install the thermometer, insert it into the well of suitable size and secure it by M5 x 8 bolt.

Maximum working pressure is PN 6 according to ČSN 130010. All manufactured thermostat wells are subjected to pressure leak test by air under water. Maximum working temperature is also labelled at the well next to maximum working pressure.

Technical data

thermometer stem length L [mm]	well length L ₁ [mm]	material / surface finish	ø A [mm]	ø B [mm]
45, 60, 100, 160, 250	50, 65, 105, 165, 255	steel / cataphoretic plating steel / chromium-plating	8,7	12,0
400	405	steel / cataphoretic plating steel / chromium-plating		
630, 1000	635, 1005	steel / cataphoretic plating steel / chromium-plating	12,5	15,0
1500	1505	steel / cataphoretic plating		



Contacts

APATOR METRA s. r. o.

Havlíčková 919/24

787 01 Šumperk

Czech Republic

Tel.: +420 583 718 261

Fax.: +420 583 718 150

E-mail: prodej@metra-su.cz

WWW: www.metra-su.cz

Your distributor:

The manufacturer reserves the right to change design, technical specifications and accessories without prior notice.